

quant®

multi asset, multi manager



quant®

BUSINESS CYCLE

An Open Ended equity scheme following business cycles based investing theme

FUND

Conviction | Concentrate | Conquer



"Everything that has been studied has been found to have cycles present"

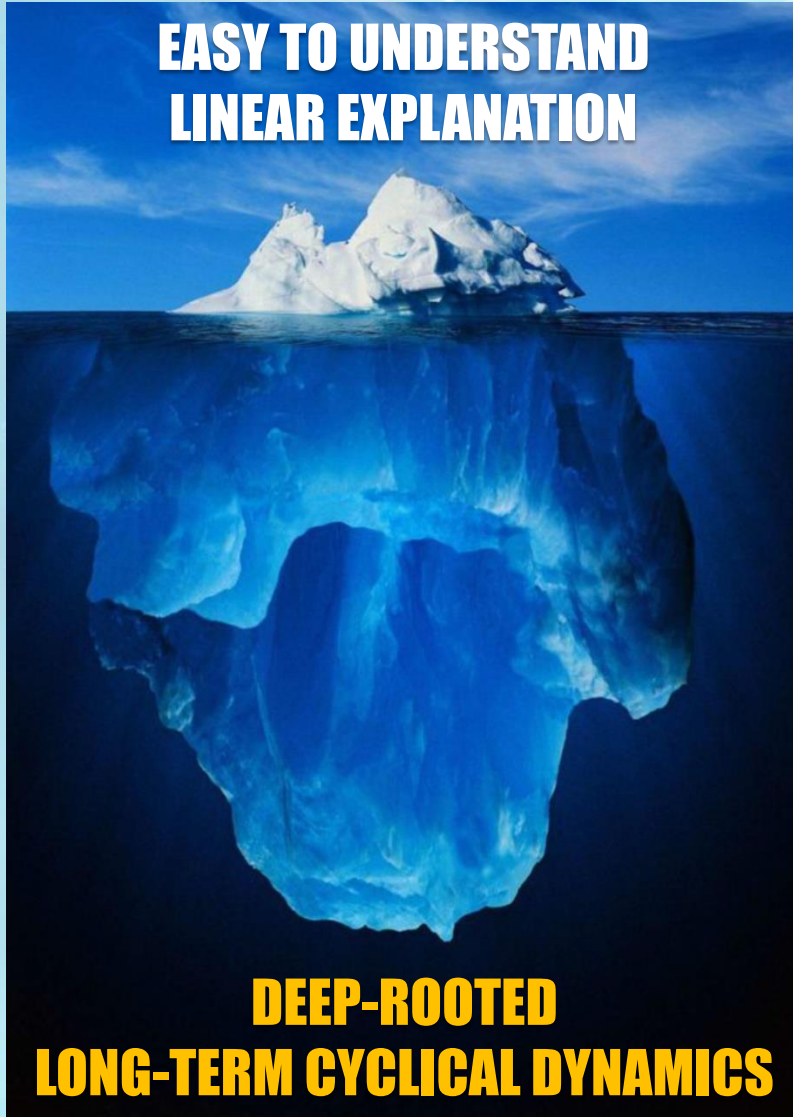
Robert R. Dewey, Chief Economic Analyst for the US Department of Commerce (1930s)

- The **Business Cycle** is a function of multiple **macroeconomic** factors viz. Monetary Policies, Fiscal health, International Trade, Technological Advancements, Demographics, Political Stability, and Climate change. The cyclicity of these forces are in turn dependent on various real economic indicators or factors such as GDP, Inflation, interest rates, fiscal deficit, capex cycles, and government policies and regulations
- By leveraging our deep insights on macro cycles, we identify sectors that are well-positioned to benefit from the current market and economic regime. This identification is a powerful source of Adaptive Alpha – we can presciently spot sectors that may be out of flavour. Overall, our focus on macro cycles, combined with our rigorous sector selections through data-driven approach, allows us to identify the most attractive investment opportunities
- For identifying cross-asset, cross market inflexion points, qGR's VLRT framework is the most suitable tool

- Cycles are the symphony of all diverse cosmic phenomenon, from giant revolving galaxies to the bits and bytes of the modern financial system
- Cycles are recognized easily like fingerprints as they leave behind an imprint
- Our study of long term cycles reveals tectonic shifts – economic, cultural, technological - that bring broad changes in the world
- These are revealed through volatility regime changes in financial markets
- As multiple simultaneous cycles coincide, predictive information assumes significance
- We have seen that in the final stages of any cycle, extreme events unfold
- These are the times when adaptive style of investment management generates significant alpha
- ‘Cycles synchronicity’ – the simultaneous occurrence of cycle beginnings or ends – helps predict major inflexion points

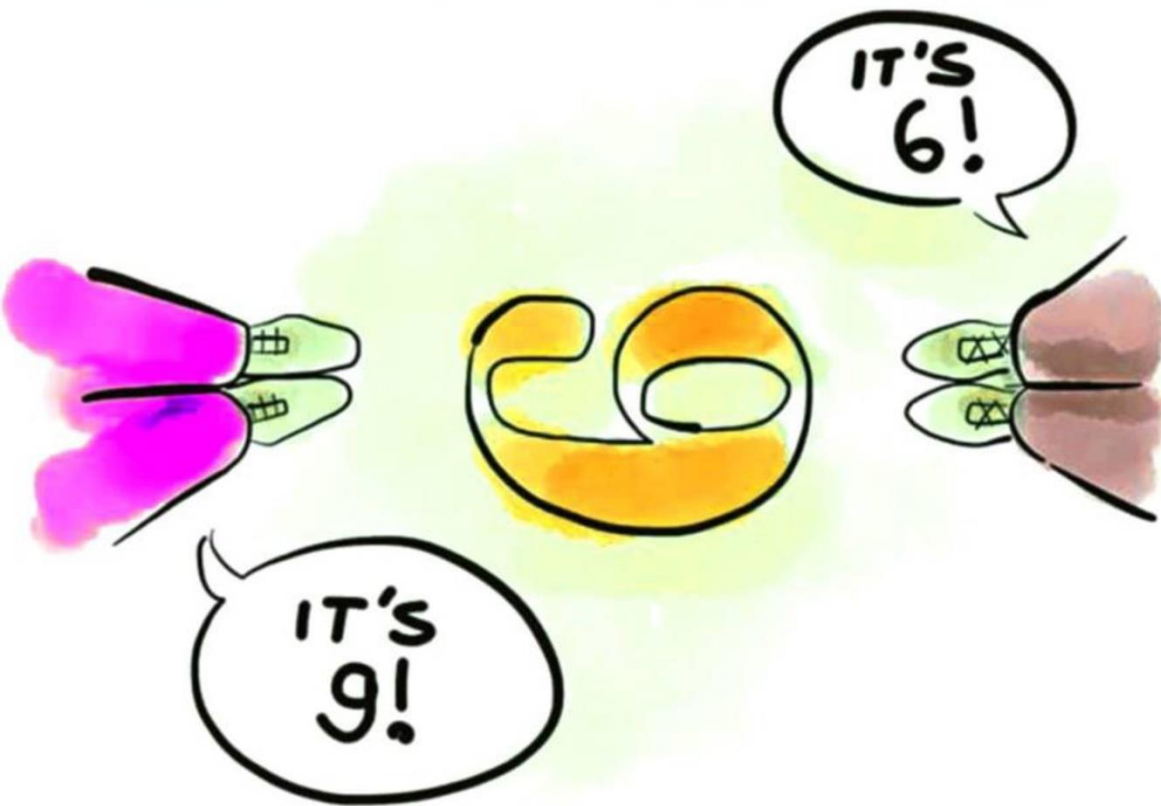


**EASY TO UNDERSTAND
LINEAR EXPLANATION**



**DEEP-ROOTED
LONG-TERM CYCLICAL DYNAMICS**

- Although cycles are found in everything they are never perfectly regular and the period of cycles also varies in cycles
- If we view an iceberg from the surface, only the small tip can be seen. If we do a deep dive the massive underlying structure is revealed
- Similarly, in the markets, a trend or dynamic close-up will appear linear and independent
- However, when we take the right macro or historical viewpoint and expand our perspective, we will see that no trend or dynamic is really linear, they are exponential and / or cyclical



What is Money Flow Analytics (MFA)?

- MFA is a set of behavioural indicators, which is built to assess the future movement of prices or direction of an asset class on macro levels and sector at micro-level based. MFA is not based on the traditional economic concepts of quantifying demand and supply or assumptions of static correlations and linear relationships. This thesis is not very pragmatic as it is extremely difficult to quantify the same
- Therefore, at quant, we identify 'Inflexion Points' based on the "Risk Appetite", "Liquidity" and "Fluidity" of an asset class and sectors or stocks
- We use MFA to reconstruct and rebalance our schemes portfolio based on the premise whether sector or stock is trading at admired levels or trading at neglected zones and what is intensity of "Risk Appetite" and "Liquidity" at that point of time
- Every asset classes, sectors and stocks have certain behaviour characteristic and we quantify the same by decoding the "Perception Analytics" by objectively assessing the relationship between "Risk Appetite; "Liquidity" along with "Valuation Analytics"

Sector/Stock	Period	Risk Appetite	Liquidity	Outcome
IT	Q4 2021	Highest	Highest	Long-term Valuation Top
Banks	Q1 2020	Highest	Highest	Long-term Valuation Top
Banks	Q4 2020	Low	Rising (early stages)	Medium-term Valuation Bottom
Pharma	Q4 2015	Highest	Highest	Long-term Valuation Top
Pharma	Q4 2019	Lowest	Rising (early stages)	Long-term Valuation Bottom
Pharma	Q4 2020	High	High	Medium-term Valuation Top
Pharma	Q1 2023	Very Low	Rising (very early stages)	Medium-term Valuation Bottom
ITC	Q4 2021	Very Low	Rising (very early stages)	Long-term Valuation Bottom
ICICI Bank	Q4 2022	Highest	Highest	Long-term Valuation Top

Fund Positioning

- Fund objective is to benefit out of economic imbalances in markets and **participate in the cyclicity of sectors and stocks** to generate superior risk-adjusted returns
- **Suitable for investors with a long term horizon** and willing to participate in a mix of **sectoral/ thematic opportunities**, in sync with the changing phases of business cycles

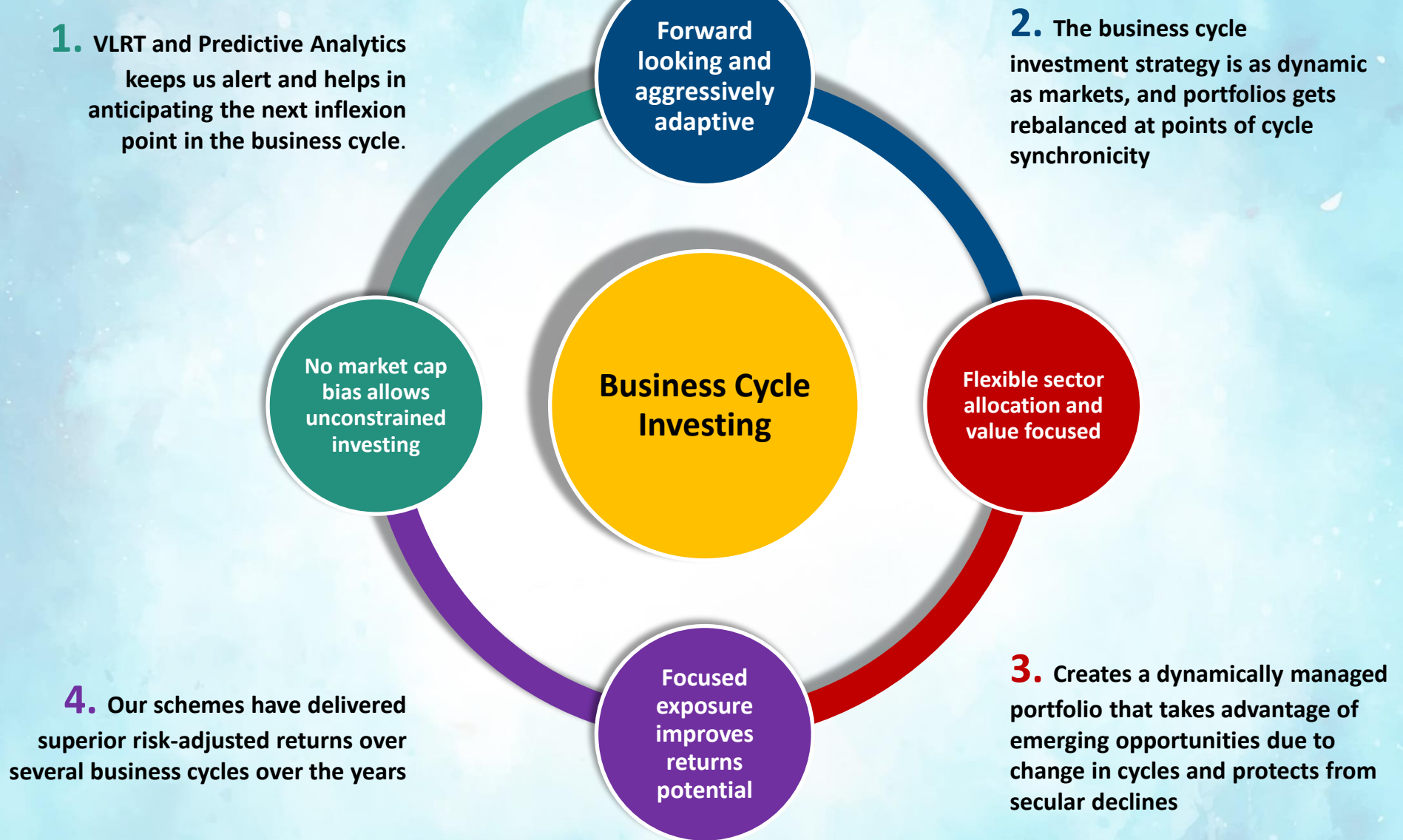
Fund Strategy

- The business cycle approach is to identify sectors through our **Predictive Analytics model** which provides a multi-dimensional framework of sector allocations across business cycles
- Through **Money Flow Analytics**, quant money managers will **invest in sectors and companies that are expected to benefit from the given phase of the economy**
- The scheme will tilt exposure to a select 6-8 sectors and **concentrate mostly on 3-4 core sectors** most of the time, that are expected to be on the cusp of a growth cycle, as evaluated through macro economic analysis
- Provides **diversification by exposure to a wide array of companies** within the sector. Maximum sector exposure will be capped at 33.33% purely from risk mitigation perspective
- Sector allocation will be **managed dynamically across market caps** providing further level of diversification
- Our time trusted **risk-mitigation VLRT Framework** and **Predictive Analytics** indicators will be used to **dynamically manage the known risks and opportunities** across the portfolio



- Business cycles occur because of disruptions or disturbances to the economy of one sort or another
- Economies are changing drastically due to event triggers in developing markets, new technologies, government policies, changing consumer preferences that drive production and distribution patterns, and a multitude of other factors
- Increasing automation and digitization have revolutionized other industries causing the ripple effect of business cycles
- Disruptions or innovations such as AI (Artificial Intelligence), IoT (Internet of Things), Data Analytics, Cloud Computing have disrupted traditional consumer and technology businesses

- In such a scenario, it is an exciting time to be an investor
- Such a period of pervasive and disruptive change across many industries can be a powerful and potential source of sustained outperformance
- Many of the pioneering disruptor companies are beginning to have a place in many core portfolio holdings despite sharp corrections in past one year
- In today's dynamic world, disruption is the norm and the reward is exponential growth



Investment Process

Global Risk Appetite Analysis and Global Liquidity Analysis to determine the flow of money across asset classes, regions and countries

Indian Risk Appetite Analysis and Domestic Liquidity Analysis to determine whether it is a "Risk On / Risk Off" Environment

Money Flow Analysis can help identify sectors at inflection points that are experiencing a shift in perception

The VLR components of our VLRT framework spring into action and help us shortlist stocks

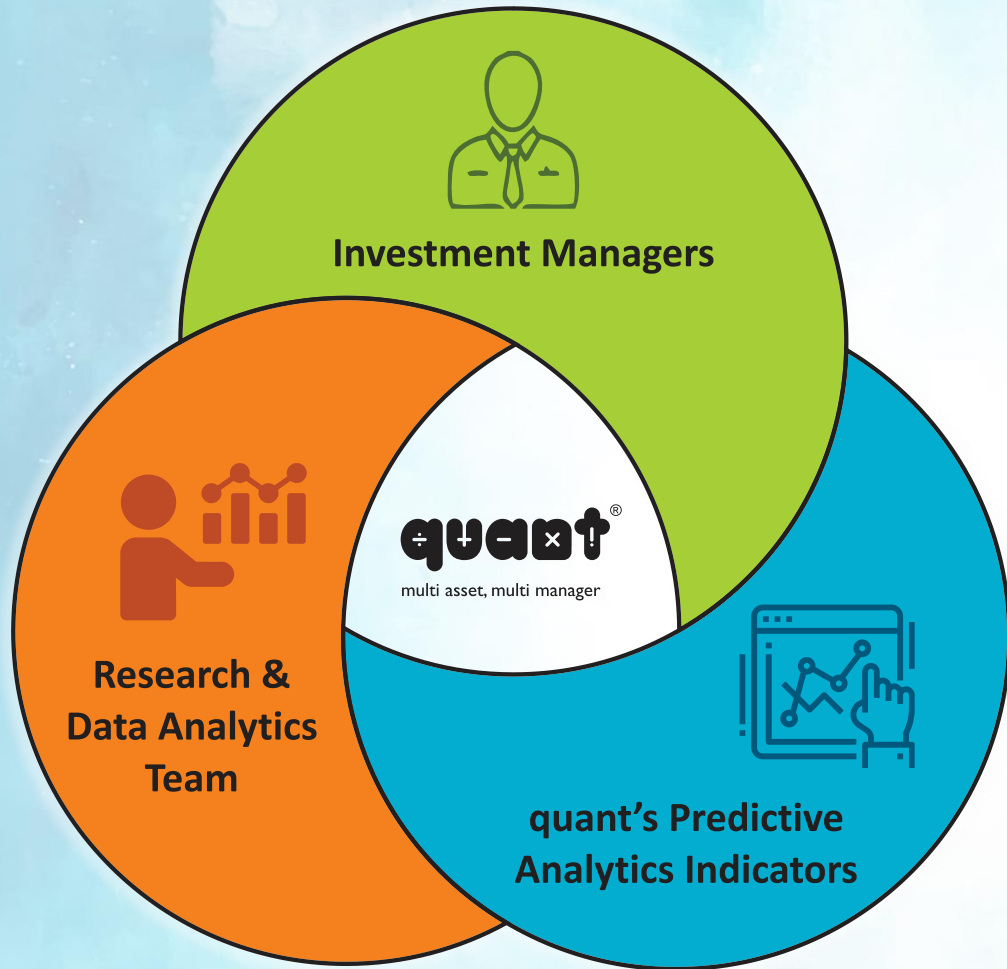
Lastly, it comes down to "Timing" – a function of all our analytical factors

quant
Port-
folio

quant pursues global research with a focus on financial markets and the real economy which includes the real economy and leveraged economy. We place a large emphasis on the role of participants' behavior. This idea has evolved into a multi-dimensional research perspective which is now formulated in our VLRT framework

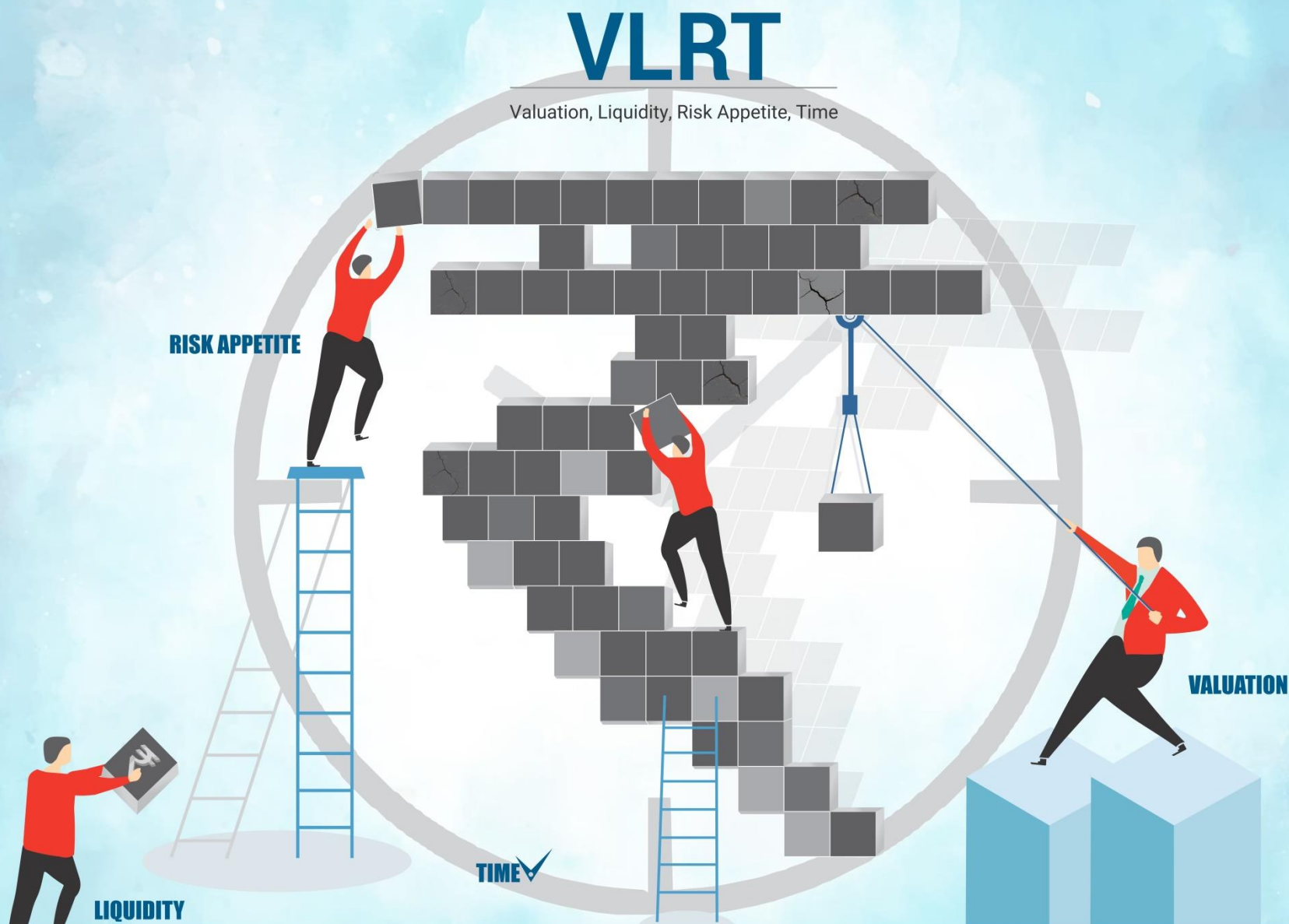
In a dynamic world, it is not just a choice but a necessity to adopt a multi-dimensional approach

The world is becoming non-linear and parabolic and to stay relevant, money managers must think with an unconstrained mind, actively update their methods and earnestly search for absolute returns, considering all markets and asset classes



“Analysis Adds Up”

We believe safeguarding investor wealth is paramount. Apart from reducing risk by investing **across asset classes**, we take diversification to another dimension by ensuring every investment decision comes from a focused discussion between **investment managers, research analysts and analytics team** – each with diverse sets of capabilities and experiences



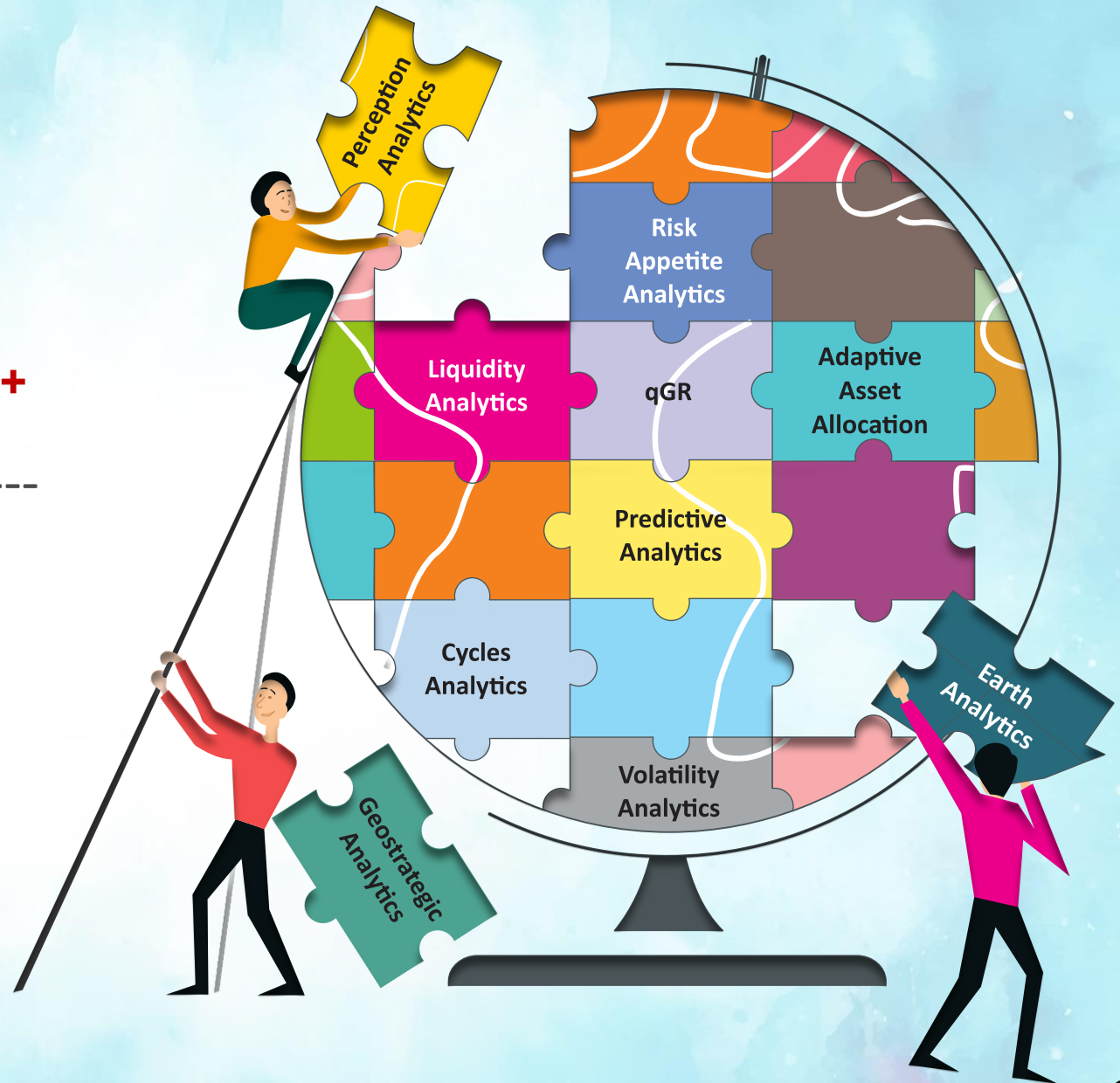
Stocks	% of Net Assets
Reliance Industries Limited	9.60
Jio Financial Services Limited	6.60
HFCL Limited	6.53
Samvardhana Motherson International Ltd	6.33
DLF Limited	5.62
S. P. Apparels Limited	5.14
Life Insurance Corporation Of India	5.14
Aurobindo Pharma Limited	5.03
Alivus Life Sciences	3.90
SUN TV Network Limited	3.69
Total of Top 10 Holdings	57.59

Sectors	% Weightage
Pharmaceuticals & Biotechnology	14.93
Petroleum Products	12.31
Finance	9.71
Telecom - Services	6.53
Insurance	6.49
Auto Components	6.33
Realty	5.62
Textiles & Apparels	5.14
Entertainment	3.69
Retailing	2.75

(Data as on May 30, 2025)

MuM
Rs. 96,000 Crores⁺

Folios^{*}
94 Lacs⁺



quant MF – Equity schemes

Fund	Money Managers	3 Months		6 Months		1 Year		3 Years		5 Years		Since Inception	
		Fund	BM	Fund	BM	Fund	BM	Fund	BM	Fund	BM	Fund	BM
quant Small Cap Fund (Inception Date: Oct. 29, 1996)	Sandeep Tandon, Ankit Pande, Varun Pattani, Ayusha Kumbhat, Yug Tibrewal, Sameer Kate, Sanjeev Sharma	17.12%	21.64%	-6.64%	-4.85%	2.25%	8.89%	28.97%	26.07%	50.27%	37.65%	18.26%	16.82%
quant Tax Plan (Inception Date: Apr. 13, 2000)	Sandeep Tandon, Ankit Pande, Varun Pattani, Ayusha Kumbhat, Yug Tibrewal, Sameer Kate, Sanjeev Sharma	15.99%	14.89%	-3.06%	0.87%	-5.17%	9.43%	19.47%	18.38%	35.76%	25.12%	20.57%	14.60%
quant Mid Cap Fund (Inception Date: Mar. 20, 2001)	Sandeep Tandon, Ankit Pande, Varun Pattani, Ayusha Kumbhat, Yug Tibrewal, Sameer Kate, Sanjeev Sharma	15.89%	19.12%	-2.35%	1.24%	-5.93%	10.68%	23.77%	26.63%	35.52%	34.12%	18.21%	19.09%
quant Multi Asset Fund (Inception Date: Apr. 17, 2001)	Sandeep Tandon, Ankit Pande, Varun Pattani, Ayusha Kumbhat, Yug Tibrewal, Sameer Kate, Sanjeev Sharma	13.19%	9.26%	1.94%	3.18%	8.20%	7.95%	23.22%	10.72%	34.42%	13.33%	15.73%	N.A.
quant Absolute Fund (Inception Date: Apr. 17, 2001)	Sandeep Tandon, Ankit Pande, Lokesh Garg, Varun Pattani, Ayusha Kumbhat, Yug Tibrewal, Sameer Kate, Sanjeev Sharma	14.61%	9.35%	1.81%	4.07%	2.08%	11.23%	16.42%	13.19%	28.67%	16.88%	17.09%	N.A.
quant Active Fund (Inception Date: Apr. 17, 2001)	Sandeep Tandon, Ankit Pande, Lokesh Garg, Varun Pattani, Ayusha Kumbhat, Yug Tibrewal, Sameer Kate, Sanjeev Sharma	14.74%	16.60%	-5.15%	0.05%	-5.48%	9.76%	17.71%	21.21%	32.17%	29.18%	19.60%	16.04%
quant Liquid Fund (Inception Date: Oct. 03, 2005)	Sanjeev Sharma, Harshvardhan Bharatia	1.76%	1.74%	3.61%	3.48%	7.29%	7.15%	6.89%	6.93%	5.90%	5.56%	7.24%	6.77%
quant Large & Mid Cap Fund (Inception Date: Jan. 08, 2007)	Sandeep Tandon, Ankit Pande, Varun Pattani, Ayusha Kumbhat, Yug Tibrewal, Sameer Kate, Sanjeev Sharma	14.64%	16.03%	-2.34%	1.55%	-3.44%	10.10%	22.29%	21.29%	27.77%	28.25%	19.01%	16.56%
quant Infrastructure Fund (Inception Date: Sep. 20, 2007)	Sandeep Tandon, Ankit Pande, Lokesh Garg, Varun Pattani, Ayusha Kumbhat, Yug Tibrewal, Sameer Kate, Sanjeev Sharma	16.15%	17.05%	-5.41%	2.94%	-7.62%	4.88%	23.91%	23.68%	43.00%	27.26%	17.94%	11.97%
quant Focused Fund (Inception Date: Aug. 28, 2008)	Sandeep Tandon, Ankit Pande, Lokesh Garg, Varun Pattani, Ayusha Kumbhat, Yug Tibrewal, Sameer Kate, Sanjeev Sharma	12.48%	14.89%	-2.47%	0.87%	-0.33%	9.43%	19.19%	18.38%	26.52%	25.12%	17.53%	14.60%
quant Flexi Cap Fund (Inception Date: Oct. 17, 2008)	Sandeep Tandon, Ankit Pande, Lokesh Garg, Varun Pattani, Ayusha Kumbhat, Yug Tibrewal, Sameer Kate, Sanjeev Sharma	15.06%	14.89%	-1.61%	0.87%	-2.63%	9.43%	22.44%	18.38%	34.87%	25.12%	19.36%	14.60%
quant ESG Equity Fund (Inception Date: Nov. 05, 2020)	Sandeep Tandon, Ankit Pande, Varun Pattani, Ayusha Kumbhat, Yug Tibrewal, Sameer Kate, Sanjeev Sharma	17.12%	12.75%	-3.17%	1.80%	3.66%	11.02%	22.01%	15.23%	N.A.	N.A.	31.98%	18.03%
quant Quantamental Fund (Inception Date: May. 03, 2021)	Sandeep Tandon, Ankit Pande, Varun Pattani, Ayusha Kumbhat, Yug Tibrewal, Sameer Kate, Sanjeev Sharma	14.88%	14.10%	-1.38%	1.66%	-3.71%	9.68%	27.12%	17.46%	N.A.	N.A.	23.85%	16.65%
quant Value Fund (Inception Date: Nov. 30, 2021)	Sandeep Tandon, Ankit Pande, Varun Pattani, Ayusha Kumbhat, Yug Tibrewal, Sameer Kate, Sanjeev Sharma	14.78%	14.89%	-5.34%	0.87%	-2.19%	9.43%	27.24%	18.38%	N.A.	N.A.	22.56%	14.61%
quant Large Cap Fund (Inception Date: Aug. 11, 2022)	Sandeep Tandon, Ankit Pande, Lokesh Garg, Varun Pattani, Ayusha Kumbhat, Yug Tibrewal, Sameer Kate, Sanjeev Sharma	12.99%	12.98%	-2.56%	1.60%	0.28%	9.20%	N.A.	N.A.	N.A.	N.A.	16.14%	14.28%
quant Overnight Fund (Inception Date: Dec. 04, 2022)	Sanjeev Sharma, Harshvardhan Bharatia	1.46%	1.49%	3.11%	3.12%	6.55%	6.52%	N.A.	N.A.	N.A.	N.A.	6.88%	6.66%
quant Gilt Fund (Inception Date: Dec. 21, 2022)	Sanjeev Sharma, Harshvardhan Bharatia	3.95%	5.05%	5.52%	6.57%	10.01%	12.01%	N.A.	N.A.	N.A.	N.A.	8.55%	9.74%
quant Dynamic Asset Allocation Fund (Inception Date: Apr. 12, 2023)	Sandeep Tandon, Ankit Pande, Varun Pattani, Ayusha Kumbhat, Yug Tibrewal, Sameer Kate, Sanjeev Sharma	15.59%	8.17%	2.49%	4.50%	4.97%	11.10%	N.A.	N.A.	N.A.	N.A.	28.52%	13.63%
quant Business Cycle Fund (Inception Date: May. 30, 2023)	Sandeep Tandon, Ankit Pande, Lokesh Garg, Varun Pattani, Ayusha Kumbhat, Yug Tibrewal, Sameer Kate, Sanjeev Sharma	16.45%	14.89%	-7.05%	0.87%	1.25%	9.43%	N.A.	N.A.	N.A.	N.A.	28.69%	21.27%
quant BFSI Fund (Inception Date: Jun. 20, 2023)	Sandeep Tandon, Ankit Pande, Varun Pattani, Ayusha Kumbhat, Yug Tibrewal, Sameer Kate, Sanjeev Sharma	18.92%	15.30%	6.57%	10.64%	3.29%	23.45%	N.A.	N.A.	N.A.	N.A.	31.26%	18.00%
quant Healthcare Fund (Inception Date: Jul. 17, 2023)	Sandeep Tandon, Ankit Pande, Varun Pattani, Ayusha Kumbhat, Yug Tibrewal, Sameer Kate, Sanjeev Sharma	17.30%	9.50%	-4.55%	-1.48%	13.06%	17.18%	N.A.	N.A.	N.A.	N.A.	28.12%	26.00%
quant Manufacturing Fund (Inception Date: Aug. 14, 2023)	Sandeep Tandon, Ankit Pande, Lokesh Garg, Varun Pattani, Ayusha Kumbhat, Yug Tibrewal, Sameer Kate, Sanjeev Sharma	15.31%	16.85%	-6.84%	0.62%	-2.87%	3.99%	N.A.	N.A.	N.A.	N.A.	26.02%	24.89%
quant Teck Fund (Inception Date: Sep. 05, 2023)	Sandeep Tandon, Ankit Pande, Varun Pattani, Ayusha Kumbhat, Yug Tibrewal, Sameer Kate, Sanjeev Sharma	15.97%	0.58%	-6.56%	-12.51%	8.54%	16.60%	N.A.	N.A.	N.A.	N.A.	15.68%	10.50%
quant Momentum Fund (Inception Date: Nov. 20, 2023)	Sandeep Tandon, Ankit Pande, Varun Pattani, Ayusha Kumbhat, Yug Tibrewal, Sameer Kate, Sanjeev Sharma	15.33%	14.89%	-0.74%	0.87%	0.38%	9.43%	N.A.	N.A.	N.A.	N.A.	28.53%	19.64%
quant Commodities Fund (Inception Date: Dec. 27, 2023)	Sandeep Tandon, Ankit Pande, Varun Pattani, Ayusha Kumbhat, Yug Tibrewal, Sameer Kate, Sanjeev Sharma	14.47%	13.01%	-6.19%	0.97%	7.70%	-1.84%	N.A.	N.A.	N.A.	N.A.	22.16%	9.40%
quant Consumption Fund (Inception Date: Jan. 24, '24)	Sandeep Tandon, Ankit Pande, Varun Pattani, Ayusha Kumbhat, Yug Tibrewal, Sameer Kate, Sanjeev Sharma	12.84%	12.30%	-5.41%	-0.15%	0.78%	9.62%	N.A.	N.A.	N.A.	N.A.	3.83%	14.74%
quant PSU Fund (Inception Date: Feb. 20, '24)	Sandeep Tandon, Ankit Pande, Varun Pattani, Ayusha Kumbhat, Yug Tibrewal, Sameer Kate, Sanjeev Sharma	17.74%	22.55%	-3.28%	-1.52%	-6.94%	-3.58%	N.A.	N.A.	N.A.	N.A.	4.55%	5.13%

Note: Data as on 30 May 2025.All returns are for direct plan. The calculation of returns since inception uses 07-01-2013 as the starting date for quant Small Cap Fund , quant ELSS Tax Saver Fund , quant Mid Cap Fund , quant Multi Asset Fund , quant Absolute Fund, quant Active Fund, quant Liquid Fund , quant Large & Mid Cap Fund , quant Infrastructure Fund , quant Focused Fund , quant Flexi Cap Fund

quant MF – Debt schemes

Fund	Fund Manager	7 Days		15 Days		1 Month		3 Month		6 Months		1 Year		3 Years		5 Years		Since Inception	
		Fund	BM	Fund	BM	Fund	BM	Fund	BM	Fund	BM	Fund	BM	Fund	BM	Fund	BM	Fund	BM
quant Liquid Fund (Inception Date: Oct. 03, 2005)	Sanjeev Sharma & Harshvardhan Bharatia	6.36%	6.15%	6.63%	6.59%	6.47%	6.34%	7.03%	5.22%	7.22%	6.96%	7.29%	7.15%	6.89%	6.93%	5.90%	5.56%	7.24%	6.77%
quant Overnight Fund (Inception Date: Dec. 04, 2022)	Sanjeev Sharma & Harshvardhan Bharatia	5.60%	5.74%	5.50%	5.65%	5.53%	5.68%	5.83%	4.48%	6.21%	6.24%	6.55%	6.52%	N.A.	N.A.	N.A.	N.A.	6.88%	6.66%
quant Gilt Fund (Inception Date: Dec. 21, 2022)	Sanjeev Sharma & Harshvardhan Bharatia	-4.17%	-3.80%	8.36%	6.11%	8.19%	9.55%	15.79%	15.16%	11.04%	13.15%	10.01%	12.01%	N.A.	N.A.	N.A.	N.A.	8.55%	9.74%

Note: Data as on 30 May 2025. The above performance data uses absolute returns for period less than 1 year and annualized returns for period more than 1 year for Direct (G) plans. However, different plans have different expense structure. Past performance may not be indicative of future performance.

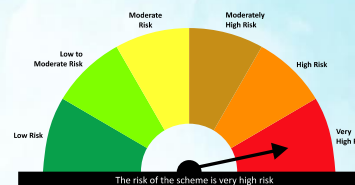
Investment Objective	To generate long-term capital appreciation by investing with focus on riding business cycles through allocation between sectors and stocks at different stages of business cycles. However, there is no assurance or guarantee that the investment objective of the Scheme will be achieved. The scheme does not assure or guarantee any returns.
Benchmark Index	NSE 500 TRI
Investment Category	An Open Ended equity scheme following business cycles based investing theme
Plans Available	quant Business Cycle Fund – Growth Option – Direct & Regular quant Business Cycle Fund – Income Distribution cum Capital Withdrawal Option (Payout & Re-investment facility)– Direct & Regular
Entry Load	Nil
Exit Load	1% for 15 days
Fund Managers	Sandeep Tandon, Ankit Pande, Lokesh Garg, Varun Pattani, Ayusha Kumbhat, Yug Tibrewal, Sameer Kate, Sanjeev Sharma
Minimum Application	Purchase: Rs.5,000/- plus in multiple of Re.1 thereafter
Additional Investment	Additional Purchase: Rs. 1,000/- and in multiples of Rs. 1/- thereafter Repurchase: Rs. 1,000/-
Systematic Investment Plan (SIP)	Rs. 1000/- and multiple of Re. 1/-
Bank Details	Account Name: QUANT BUSINESS CYCLE FUND Account Number: 57500001214103 IFSC Code: HDFC0000060, Branch: HDFC, Fort, Mumbai 400001

This product is suitable for investors who are seeking*:

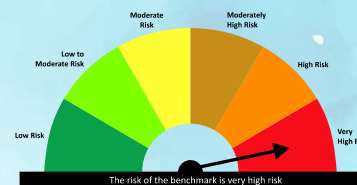
- Capital appreciation over long term
- An equity scheme that invests predominantly in Indian markets with focus on riding business cycles through dynamic allocation between various sectors and stocks at different stages of business cycles.

*Investors should consult their financial advisors if in doubt about whether the product is suitable for them.

Scheme Riskometer



Benchmark Riskometer



LINKS



Scheme Information Document

[Click here](#)



Scheme One Pager

[Click here](#)



quant Mutual Fund Website

[Click here](#)

ALSO AVAILABLE ON



Disclaimer: All figures and data given in the document are dated unless stated otherwise. In the preparation of the material contained in this document, the AMC has used information that is publicly available, including information developed in-house. Some of the material used in the document may have been obtained from members/persons other than the AMC and/or its affiliates and which may have been made available to the AMC and/or to its affiliates. Information gathered and material used in this document is believed to be from reliable sources. The AMC however does not warrant the accuracy, reasonableness and / or completeness of any information. We have included statements / opinions / recommendations in this document, which contain words, or phrases such as “will”, “expect”, “should”, “believe” and similar expressions or variations of such expressions, that are “forward looking statements”. Actual results may differ materially from those suggested by the forward looking statements due to risk or uncertainties associated with our expectations with respect to, but not limited to, exposure to market risks, general economic and political conditions in India and other countries globally, which have an impact on our services and / or investments, the monetary and interest policies of India, inflation, deflation, unanticipated turbulence in interest rates, foreign exchange rates, equity prices or other rates or prices etc. The AMC (including its affiliates), the Mutual Fund, the trust and any of its officers, directors, personnel and employees, shall not liable for any loss, damage of any nature, including but not limited to direct, indirect, punitive, special, exemplary, consequential, as also any loss of profit in any way arising from the use of this material in any manner. The recipient alone shall be fully responsible/are liable for any decision taken on this material. Investors are advised to consult their own legal, tax and financial advisors to determine possible tax, legal and other financial implication or consequence of subscribing to the units of quant Mutual Fund. quant Money Managers Ltd. has no duty or obligation to update the information contained herein. Past performance may or may not be sustained in the future. This presentation, including the information contained herein, may not be copied, reproduced, republished, or posted in whole or in part, in any form without the prior written consent of quant Money Managers Ltd.

Mutual Fund investments are subject to market risks, read all scheme related documents carefully.

quant[®]
BUSINESS CYCLE
FUND

quant Money Managers Limited

Corporate Office: 6th Floor, Sea Breeze Building, Appasaheb Marathe Marg, Prabhadevi, Mumbai - 400 025.

Tel: +91 22 6295 5000 | Whatsapp: +91 9920 21 22 23 | E-mail: help.investor@quant.in | help.distributor@quant.in | www.quantmutual.com