



quant<sup>®</sup>

# LARGE CAP

FUND

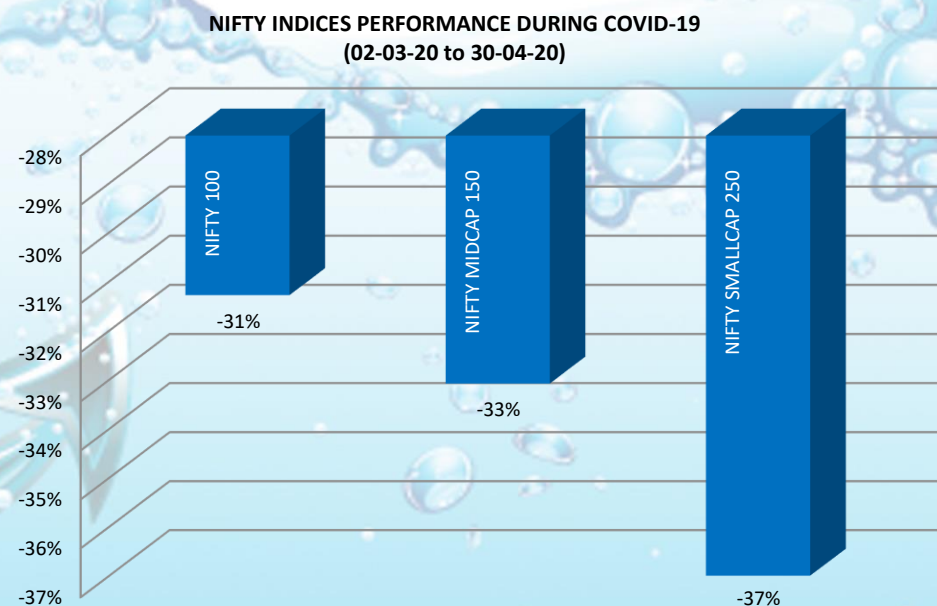
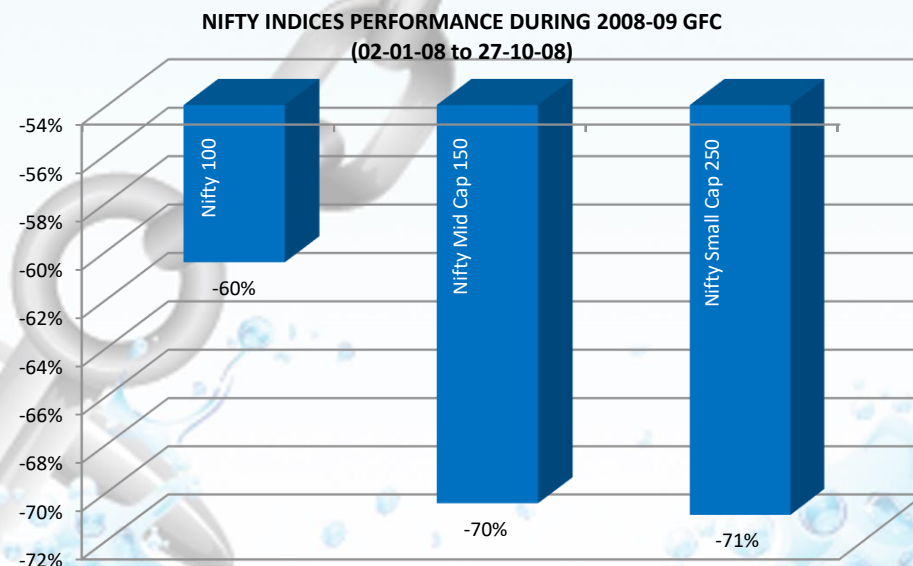
An open ended equity scheme  
predominantly investing in large cap stocks

Sailing through market cycles



During extreme market conditions, large caps are usually less volatile and more stable. Large caps not only perform better than others during volatile phases but also offer superior downside protection

Year	Nifty 100 TRI	Nifty Mid 150 TRI	Nifty Small 250 TRI
CY2011	-25.20%	-31.62%	-35.78%
CY2012	32.25%	47.18%	40.09%
CY2013	6.98%	-2.44%	-7.64%
CY2014	34.83%	61.78%	69.39%
CY2015	-1.32%	9.28%	9.96%
CY2016	4.66%	5.47%	0.52%
CY2017	32.77%	54.36%	56.09%
CY2018	3.39%	-12.49%	-26.54%
CY2019	11.44%	0.58%	-7.59%
CY2020	15.97%	25.12%	25.55%
CY2021	26.03%	48.48%	61.48%
YTD2022*	-7.94%	-9.19%	-22.75%



*Give your  
portfolio the  
Blue Chip  
advantage!*

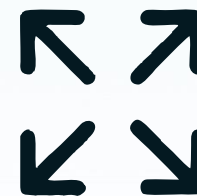




**Lower volatility & downside protection**



Businesses having **superior core competencies and distinctive advantages** that keep them ahead of the curve



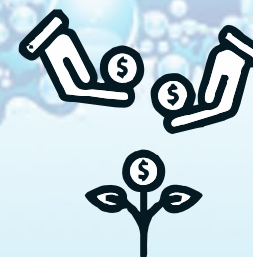
**Rapidly scalable** business models enabling **constant growth**



**Highly liquid securities,** thus enabling investments **at low impact costs**



**High capital efficiency and economies of scale**



**Proven track record and large contributors in India's past & future growth**

## VLRT Investment Framework

Our VLRT Investment Framework helps in generating alpha by identifying sectors and securities at their inflection points, thus, execute sector rotations, early identification of potential outperformers and construct a dynamic portfolio

## Generating Alpha & Managing Volatility

Scheme will invest minimum 80% of the portfolio in large cap stocks and 20% stocks from the Nifty 500 universe in a dynamic manner to generate alpha

Ability to generate **extra** alpha by writing call options (max 20% of the portfolio value) and hedge portfolio on **inflection points** to ensure portfolio can combat market volatility effectively

## Macro-Centric Approach

Our “Predictive Analytics” helps in creating a balanced portfolio and achieve outperformance even in rapidly changing macro environment

## Leveraged Economy & Real Economy – What’s the Link?

In contrast to the conventional beliefs, it’s the leveraged economy that drives the real economy. Thus, studying this relationship helps us look beyond the obvious

## Volatility, Credit & Leverage

qGR believes that 2018 – 2023 will be remembered as the Volatility Expansion Phase (VEP). During this phase, traditional investment strategies will underperform; the dynamic way of money management will enable us to sail through the tides of volatility to deliver superior risk-adjusted-returns

## Liquidity Analytics

Liquidity in the 21st century seems to be part of a never-ending cycle. Studying this pattern is essential to understand the flow of money

## The Physics of Time

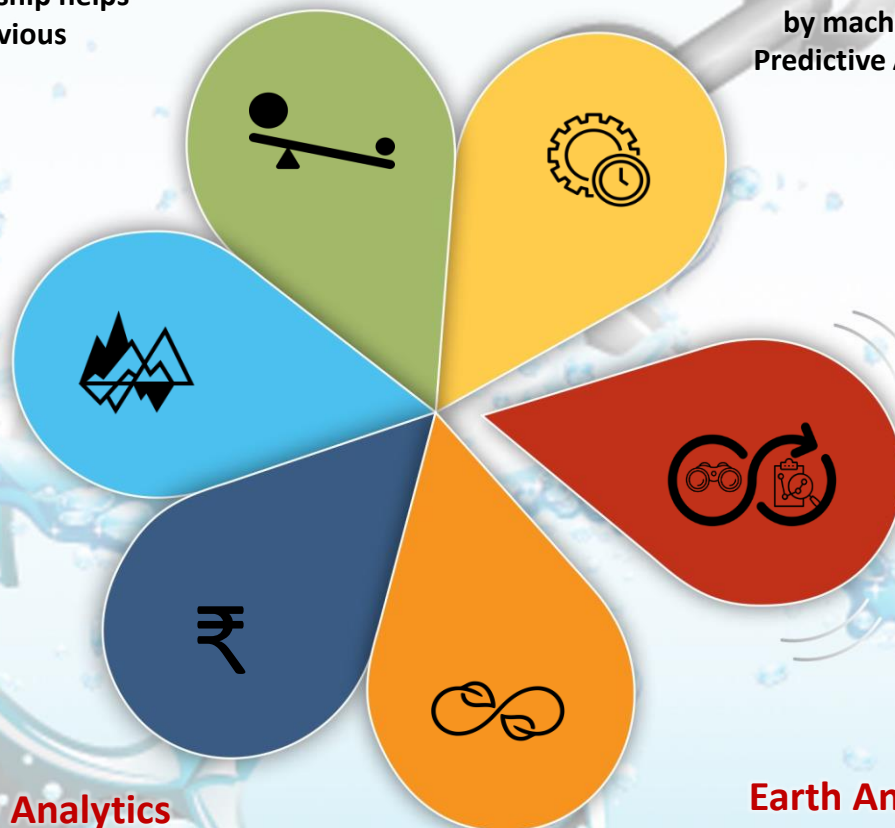
quant’s core Investment Principle is - Timing is Everything. In this digitized age, with an explosion of data & information, multi-variate models designed by humans but run by machines is the only way to gain Predictive Analytics power, thus, to stay relevant

## On the look out for the next new thing!

The paradigms mentioned here form a non-exhaustive list. In order to remain Relevant, quant Global Research is always working to incorporate new ideas and paradigms into its investment philosophy

## Earth Analytics

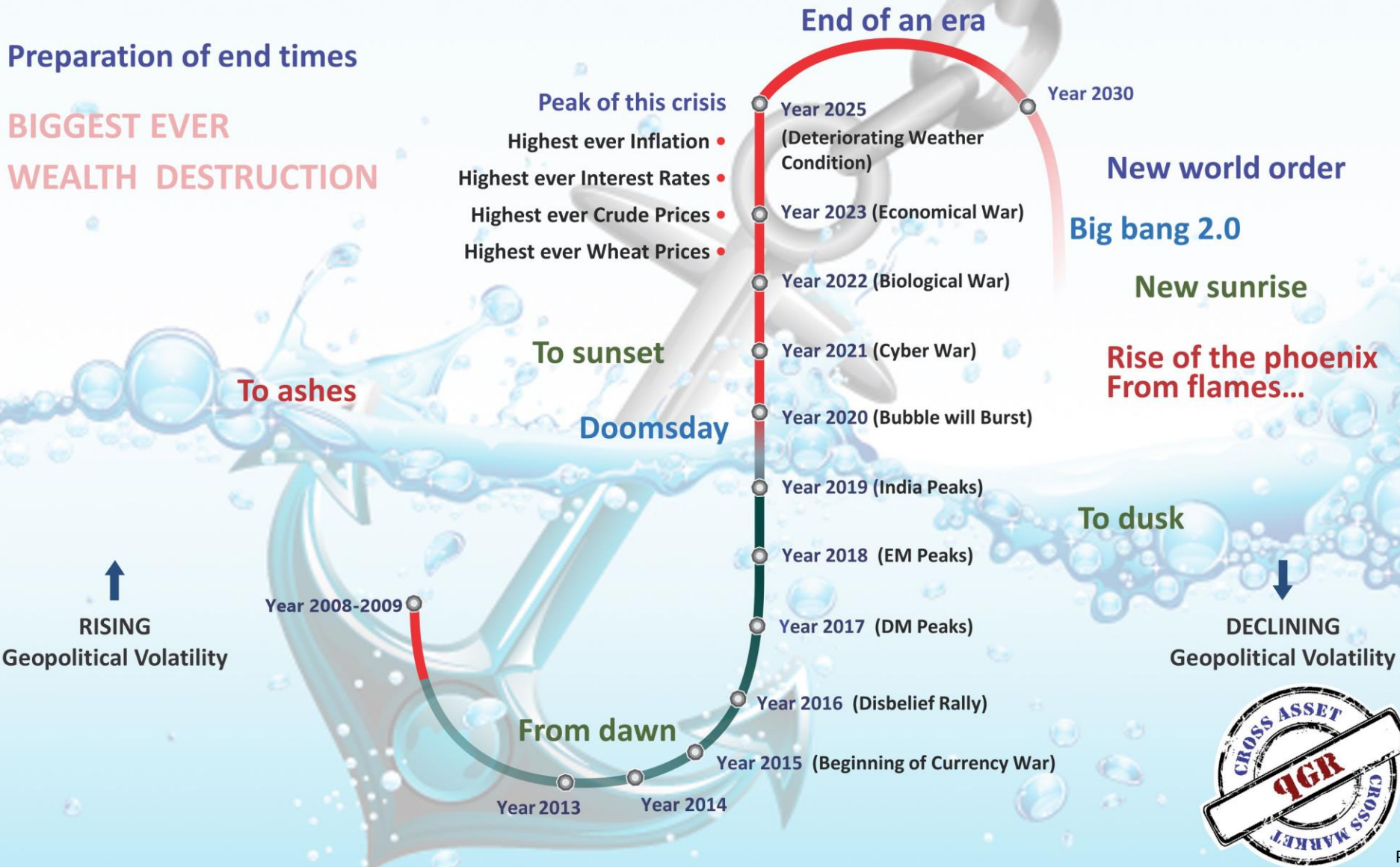
A relatively new area of research for us, zooming out to study the climate cycle reveals several socio-economic trends of great significance especially during transition phases between cycles



*"The fellow that can only see a week ahead is always the popular fellow, for he is looking with the crowd. But the one that can see years ahead, he has a telescope but he can't make anybody believe he has it."* — Will Rogers

**Preparation of end times**

**BIGGEST EVER WEALTH DESTRUCTION**





2017-47 Global Reset period and between 2020-2030 Agri Commodities will give highest returns; Interest rate & Inflation (DM centric) will remain elevated till 2027-28 - **Big picture (multi decades) identified via Earth Analytics** (*Natural crisis will be high as compared to man-made crisis*)

Relevance of US & FED will decline & USD(\$) will loose its reserve currency status; DLT (Block chain) framework or gold backed Crypto Currency will shine - **Very long-term (few decades) trends are identified via Macro Analytics and Cycle Analytics**

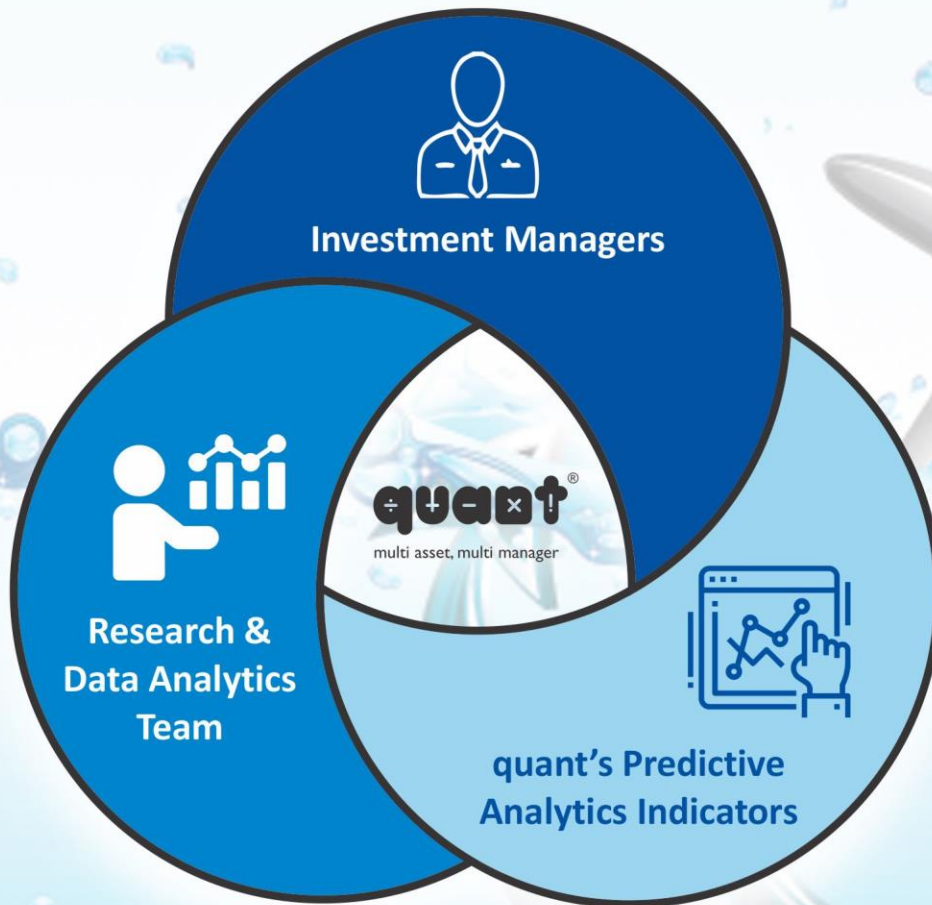
2021-2030 Asia Centric EMs (India in particular) will outperform DMs and Value theme will outperform Growth - **Long-term trends (one decade) are identified via Liquidity & Risk Appetite Analytics and Perception Analytics**

2018-23 Volatility Expansion Phase (VEP) - **Medium-term (three to five years) trends are identified via Volatility Analytics and Cycle Analytics**

Easy phase of bull run peaked out in Q4 of 2021 and currently, we are in difficult phase of bull run in India. H2 2022 will deliver superior returns and reflex rally is on cards as Risk Appetite Analytics are showing signs of exhaustion - **Short-term trends (few quarters) are identified via Money-Flow Analytics and other Behaviour Analytics**

## “Analysis Adds Up”

We believe safeguarding investor wealth is paramount. Apart from reducing risk by investing **across asset classes**, we take diversification to another dimension by ensuring every investment decision comes from a focused discussion between **investment managers, research analysts and analytics team** – each with diverse sets of **capabilities and experiences**



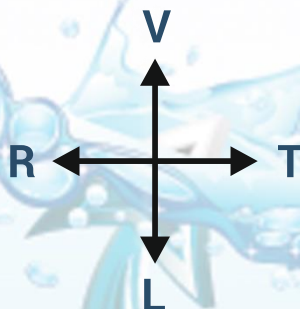
*Being Relevant with 'predictive analytics'*

**VALUATION ANALYTICS**

Knowing the difference between price and value.

**RISK APPETITE ANALYTICS**

Perceiving what drives market participants to certain actions and reactions.



**TIMING**

Being in sync with the waves of value and behaviour

**LIQUIDITY ANALYTICS**

Understanding the flow of money across asset classes.

The core engine that drives us and sets us apart is a robust and differentiated investment framework that enables us to see beyond the horizon and stay relevant. Our unique analytical framework for enabling 'predictive analytics' encompasses all available asset classes and sectors, formulating a multi-dimensional research perspective

**Why multi-dimensional?**

The markets are a complex, dynamic system. There is no one formula or strategy or perspective that can consistently outperform

**A diverse set of variables and participants are continuously interacting with each other in myriad ways**

In the face of this uncertainty and complexity, instead of limiting ourselves to any one school of thought **we have found consistent success by studying markets along four dimensions: Valuation, Liquidity, Risk Appetite, and Time [VLRT]**

# VLRT

Valuation, Liquidity, Risk Appetite, Time



**DYNAMIC REBALANCING**

- Our VLRT investment framework is a combination of four elements, namely: Valuation Analytics, Liquidity Analytics, Risk Appetite Analytics and Timing, we give 1/3rd weightage to the first three components of the framework
- When all the three components are skewed on one side, it helps with better timing of investments, thus, enabling superior risk management of the scheme
- A multi-level approach to investing - each fund manager looks after only one of the components of the VLRT investment framework
- We believe that safeguarding investor wealth is paramount - endeavor to reduce risk by studying and investing across several asset classes
- We take diversification to another dimension by ensuring every investment decision comes from a focused discussion between investment managers - each with diverse sets of capabilities and experiences
- Since September 2019, through our novel VLRT Investment Framework, we have been practicing a Dynamic Style of Money Management, wherein, we change our style of investing based on the prevalent macro environment
- We believe that “Timing is Everything” as for risk mitigation strategies, we use market timing indicators. Timing Indicators are function of multiple analytics and when most of the data points are skewed in one direction, it helps in taking better active decisions

	Traditional Active Investing	<b>Adaptive Asset Allocation</b>
<b>Methodology</b>	Identify securities that will outperform the market due to standalone economic attributes	<b>Identify securities with sound economic attributes and adjust systematic risk exposures to benefit from periods of market under or over valuation due to liquidity and behavioral changes</b>
<b>Source of alpha</b>	Company-specific unsystematic risk	<b>Unsystematic risk + anomalous systematic risk situations</b>
<b>Logical basis</b>	Less diversification, resulting in company-specific risk exposures that can generate alpha	<b>Managed diversification to systematic risk to benefit and protect against periods of volatility while simultaneously harnessing company-specific risk exposures based on valuations</b>
<b>Tools</b>	Detailed knowledge and modeling of individual companies and industries to find intrinsic value	<b>Detailed knowledge and modeling of individual companies and industries to find intrinsic value along with sentiment indicators, liquidity data and game theory analysis that track macroeconomic and geopolitical developments</b>
<b>Horizon</b>	Daily to 5 years	<b>Daily to perpetuity</b>
<b>Nature of Allocation</b>	Tactical	<b>Dynamic</b>

## Measurable is Reliable

<b>Valuation Analytics</b>	<b>33.33%</b>
<b>Liquidity Analytics</b>	<b>33.33%</b>
<b>Risk Appetite (Sentiments) Analytics</b>	<b>33.33%</b>

**Valuation Analytics** is best captured by cash-flows based indicators or financial ratios of both stocks in absolute basis and sector on relative basis

**Liquidity Analytics** is best captured by quant Money-Flow Analysis, Holding Patterns, Indices weightages and indices rebalancing exercise

**Risk Appetite Analytics** is best captured by quant Capitulation Indicator, quant Fear or Greed Indicators, quant Euphoria Indicator, Bearish Bets Indicators etc.

<b>Valuation Analytics (score 1-10)</b>	<b>8</b>
<b>Liquidity Analytics (score 1-10)</b>	<b>5</b>
<b>Risk Appetite Analytics (score 1-10)</b>	<b>8</b>
<b>Total Score</b>	<b>21/30</b>

quant pursues global research with a focus on financial markets and the real economy which includes the real economy and leveraged economy. We place a large emphasis on the role of participants' behavior. This idea has evolved into a multi-dimensional research perspective which is now formulated in our VLRT framework

**In a dynamic world, it is not just a choice but a necessity to adopt a multi-dimensional approach**

The world is becoming non-linear and parabolic and to stay relevant, money managers must think with an unconstrained mind, actively update their methods and earnestly search for absolute returns, considering all markets and asset classes





Stocks	% of Net Assets
Reliance Industries Limited	8.89
ITC Limited	6.11
Bajaj Finance Limited	6.02
Grasim Industries Ltd	6.00
Life Insurance Corporation Of India	5.74
Adani Enterprises Limited	5.16
Jio Financial Services Limited	5.11
Larsen & Toubro Limited	4.95
Britannia Industries Limited	4.52
State Bank of India	4.26
<b>Total of Top 10 Holdings</b>	<b>56.75</b>

Sectors	% Weightage
Finance	11.13
Insurance	9.08
Diversified FMCG	8.90
Petroleum Products	8.89
Construction	7.38
Food Products	6.85
Cement & Cement Products	6.00
Pharmaceuticals & Biotechnology	5.50
Metals & Minerals Trading	5.16
Auto Components	4.33

(Data as on November 29, 2024)

**MuM**  
**Rs. 97,000 Crores<sup>+</sup>**

**Folios<sup>\*</sup>**  
**84 Lacs<sup>+</sup>**



\*Total folios and MuM (Money under Management) data as on 30 November '24 (approximately)

# quant MF – Equity schemes

Fund	Money Managers	3 Months		6 Months		1 Year		3 Years		5 Years		Since Inception	
		Fund	BM	Fund	BM	Fund	BM	Fund	BM	Fund	BM	Fund	BM
<b>quant Small Cap Fund</b> (Inception Date: Oct. 29, 1996)	Ankit Pande, Vasav Sahgal, Sanjeev Sharma	-2.36%	-1.84%	7.71%	12.75%	40.02%	35.95%	30.52%	25.59%	47.82%	30.79%	19.79%	18.08%
<b>quant Tax Plan</b> (Inception Date: Apr. 13, 2000)	Ankit Pande, Vasav Sahgal	-8.44%	-3.86%	-2.71%	7.37%	27.22%	27.89%	20.86%	16.86%	32.90%	19.47%	21.84%	15.17%
<b>quant Mid Cap Fund</b> (Inception Date: Mar. 20, 2001)	Ankit Pande, Vasav Sahgal, Sanjeev Sharma	-8.58%	-3.73%	-3.84%	8.06%	30.15%	32.71%	26.36%	24.22%	34.04%	28.04%	19.28%	19.84%
<b>quant Multi Asset Fund</b> (Inception Date: Apr. 17, 2001)	Sandeep Tandon, Ankit Pande, Sanjeev Sharma, Vasav Sahgal, Varun Pattani	3.42%	-2.18%	5.82%	4.77%	38.57%	18.01%	23.93%	10.71%	29.21%	11.23%	16.25%	N.A.
<b>quant Absolute Fund</b> (Inception Date: Apr. 17, 2001)	Sanjeev Sharma, Ankit Pande, Vasav Sahgal	-6.18%	-1.85%	-0.17%	6.23%	24.83%	17.23%	16.46%	11.09%	24.96%	13.44%	17.39%	N.A.
<b>quant Active Fund</b> (Inception Date: Apr. 17, 2001)	Ankit Pande, Vasav Sahgal, Sanjeev Sharma	-7.89%	-3.47%	-1.84%	8.46%	26.77%	30.08%	18.75%	19.68%	29.76%	23.16%	21.03%	16.76%
<b>quant Liquid Fund</b> (Inception Date: Oct. 03, 2005)	Sanjeev Sharma	1.80%	1.76%	3.57%	3.55%	7.32%	7.34%	6.35%	6.37%	5.76%	5.39%	7.23%	6.76%
<b>quant Large &amp; Mid Cap Fund</b> (Inception Date: Jan. 08, 2007)	Ankit Pande, Vasav Sahgal, Sanjeev Sharma	-8.49%	-3.95%	-1.83%	7.29%	32.77%	29.26%	23.31%	19.30%	26.82%	22.42%	20.12%	17.16%
<b>quant Infrastructure Fund</b> (Inception Date: Sep. 20, 2007)	Ankit Pande, Vasav Sahgal	-6.63%	-6.67%	-3.62%	0.75%	40.67%	34.54%	26.20%	21.82%	36.10%	22.87%	19.31%	12.23%
<b>quant Focused Fund</b> (Inception Date: Aug. 28, 2008)	Ankit Pande, Vasav Sahgal, Sanjeev Sharma	-6.95%	-3.86%	1.53%	7.37%	28.51%	27.89%	19.48%	16.86%	23.65%	19.47%	18.58%	15.17%
<b>quant Flexi Cap Fund</b> (Inception Date: Oct. 17, 2008)	Sandeep Tandon, Ankit Pande, Sanjeev Sharma, Vasav Sahgal	-9.47%	-3.86%	-1.67%	7.37%	33.06%	27.89%	21.41%	16.86%	32.67%	19.47%	20.41%	15.17%
<b>quant ESG Equity Fund</b> (Inception Date: Nov. 05, 2020)	Ankit Pande, Sanjeev Sharma, Vasav Sahgal	-7.88%	-5.22%	5.85%	7.82%	34.73%	25.00%	25.92%	12.40%	N.A.	N.A.	37.63%	19.92%
<b>quant Quantamental Fund</b> (Inception Date: May. 03, 2021)	Ankit Pande, Sandeep Tandon, Sanjeev Sharma, Vasav Sahgal	-8.65%	-4.17%	-3.23%	6.81%	32.08%	26.86%	29.65%	15.82%	N.A.	N.A.	28.09%	18.64%
<b>quant Value Fund</b> (Inception Date: Nov. 30, 2021)	Sandeep Tandon, Ankit Pande, Sanjeev Sharma, Vasav Sahgal	-6.11%	-3.86%	2.16%	7.37%	44.53%	27.89%	N.A.	N.A.	N.A.	N.A.	29.11%	16.90%
<b>quant Large Cap Fund</b> (Inception Date: Aug. 11, 2022)	Sandeep Tandon, Ankit Pande, Sanjeev Sharma, Vasav Sahgal	-4.94%	-4.19%	2.06%	6.47%	32.45%	25.74%	N.A.	N.A.	N.A.	N.A.	21.32%	16.82%
<b>quant Overnight Fund</b> (Inception Date: Dec. 04, 2022)	Sanjeev Sharma	1.68%	1.63%	3.36%	3.29%	7.01%	6.76%	N.A.	N.A.	N.A.	N.A.	7.02%	6.73%
<b>quant Gilt Fund</b> (Inception Date: Dec. 21, 2022)	Sanjeev Sharma	1.89%	2.08%	4.27%	5.13%	8.82%	10.72%	N.A.	N.A.	N.A.	N.A.	7.83%	8.75%
<b>quant Dynamic Asset Allocation Fund</b> (Inception Date: Apr. 12, 2023)	Sandeep Tandon, Ankit Pande, Sanjeev Sharma, Vasav Sahgal	-6.70%	-0.99%	2.20%	5.82%	35.16%	15.37%	N.A.	N.A.	N.A.	N.A.	36.66%	15.00%
<b>quant Business Cycle Fund</b> (Inception Date: May. 30, 2023)	Sandeep Tandon, Ankit Pande, Sanjeev Sharma, Vasav Sahgal	-7.24%	-3.86%	7.96%	7.37%	33.60%	27.89%	N.A.	N.A.	N.A.	N.A.	46.88%	28.53%
<b>quant BFSI Fund</b> (Inception Date: Jun. 20, 2023)	Sandeep Tandon, Ankit Pande, Sanjeev Sharma, Vasav Sahgal	-9.36%	1.87%	-3.76%	11.47%	26.04%	21.25%	N.A.	N.A.	N.A.	N.A.	37.96%	16.49%
<b>quant Healthcare Fund</b> (Inception Date: Jul. 17, 2023)	Sandeep Tandon, Ankit Pande, Sanjeev Sharma, Vasav Sahgal	-3.67%	-1.29%	16.63%	16.74%	42.90%	40.54%	N.A.	N.A.	N.A.	N.A.	45.03%	38.54%
<b>quant Manufacturing Fund</b> (Inception Date: Aug. 14, 2023)	Sandeep Tandon, Ankit Pande, Sanjeev Sharma, Vasav Sahgal	-8.14%	-6.63%	3.35%	1.88%	41.40%	38.73%	N.A.	N.A.	N.A.	N.A.	45.49%	35.39%
<b>quant Teck Fund</b> (Inception Date: Sep. 05, 2023)	Sanjeev Sharma, Ankit Pande, Vasav Sahgal	-3.22%	1.87%	15.04%	30.34%	37.82%	34.91%	N.A.	N.A.	N.A.	N.A.	29.81%	28.44%
<b>quant Momentum Fund</b> (Inception Date: Nov. 20, 2023)	Sandeep Tandon, Ankit Pande, Sanjeev Sharma, Vasav Sahgal	-8.87%	-3.86%	0.49%	7.37%	47.50%	27.89%	N.A.	N.A.	N.A.	N.A.	46.22%	29.41%
<b>quant Commodities Fund</b> (Inception Date: Dec. 27, 2023)	Sandeep Tandon, Ankit Pande, Sanjeev Sharma, Vasav Sahgal	-2.98%	-9.56%	13.38%	-4.40%	N.A.	N.A.	N.A.	N.A.	N.A.	N.A.	45.80%	13.64%
<b>quant Consumption Fund</b> (Inception Date: Jan. 24, '24)	Sandeep Tandon, Ankit Pande, Sanjeev Sharma, Vasav Sahgal	-6.16%	-4.83%	5.17%	8.49%	N.A.	N.A.	N.A.	N.A.	N.A.	N.A.	13.34%	24.61%
<b>quant PSU Fund</b> (Inception Date: Feb. 20, '24)	Sandeep Tandon, Ankit Pande, Sanjeev Sharma, Vasav Sahgal	-13.02%	-10.99%	-5.08%	-3.76%	N.A.	N.A.	N.A.	N.A.	N.A.	N.A.	12.32%	10.74%

Note: Data as on 01 December '24. All returns are for direct plan. The calculation of returns since inception uses 07-01-2013 as the starting date for quant Small Cap Fund, quant ELSS Tax Saver Fund, quant Mid Cap Fund, quant Multi Asset Fund, quant Absolute Fund, quant Active Fund, quant Liquid Fund, quant Large & Mid Cap Fund, quant Infrastructure Fund, quant Focused Fund, quant Flexi Cap Fund

# quant MF – Debt schemes

Fund	Fund Manager	7 Days		15 Days		1 Month		3 Month		6 Months		1 Year		3 Years		5 Years		Since Inception	
		Fund	BM	Fund	BM	Fund	BM	Fund	BM	Fund	BM	Fund	BM	Fund	BM	Fund	BM	Fund	BM
<b>quant Liquid Fund</b> (Inception Date: Oct. 03, 2005)	Sanjeev Sharma	6.90%	1.96%	6.78%	4.34%	7.14%	6.10%	7.19%	4.98%	7.14%	6.90%	7.32%	7.24%	6.35%	6.33%	5.76%	5.37%	7.23%	6.75%
<b>quant Overnight Fund</b> (Inception Date: Dec. 04, 2022)	Sanjeev Sharma	6.82%	1.91%	6.67%	4.27%	6.67%	5.65%	6.70%	4.60%	6.71%	6.39%	7.01%	6.66%	N.A.	N.A.	N.A.	N.A.	7.02%	6.68%
<b>quant Gilt Fund</b> (Inception Date: Dec. 21, 2022)	Sanjeev Sharma	14.55%	1.96%	7.70%	2.79%	6.11%	3.02%	7.55%	4.45%	8.53%	9.04%	8.82%	10.07%	N.A.	N.A.	N.A.	N.A.	7.83%	8.43%

Note :Data as on 30 November '24. The above performance data uses absolute returns for period less than 1 year and annualized returns for period more than 1 year for Direct (G) plans. However, different plans have different expense structure. Past performance may not be indicative of future performance.



## **Sandeep Tandon | Founder & Chief Investment Officer**

Sandeep is the founder & chief investment officer of the quant Group and has a vast experience of over 27 years in the capital markets. His journey in the money management business started in FY 1992-93 with GIC mutual fund (a JV partner with George Soros in India) where he was a trainee. He later joined IDBI Asset Management (now Principal Asset Management), where he was a founding member and was part of the core team that initialized the asset management business. He played a key role in devising, conceptualizing and marketing one of India's most successful mutual fund schemes: IDBI I-NITS 95. Furthermore, Sandeep worked in pivotal positions at several reputed financial services firms including ICICI Securities (a JV partner with J P Morgan in India), Kotak Securities (a J V partner with Goldman Sachs in India) and REFCO (erstwhile global derivatives firm). He has also worked at the Economic Times Research Bureau (a research wing of Bennett, Coleman and Company Limited)

Sandeep's credentials as a Global Macro Strategist are well established. He has channeled his vast experiences, interests and novel thinking into build the predictive analytics framework and the dynamic VLRT investment framework of the quant group. It is these frameworks coupled with his deep understanding of various asset classes at a global level, including, credit, commodities, equities and now digital currencies that enable Sandeep in definitive identification of market inflexion points and arrive at conclusive micro and macro calls

Sandeep has a strong belief in quant Group's role as a knowledge partner in creating awareness about latest developments in investment philosophy and ideas, such as behavioral research. It is for this reason that he believes investor education is of utmost importance and the group, under his leadership, has undertaken many initiatives in this regard. Based on this belief Sandeep authored a book titled 'Being Relevant' which was published in May 2019. This book builds on research covering decades, even centuries of data points, distilled through quant's VLRT framework and predictive analytics indicators. The book further outlines the potential trajectory for the world in the coming decades that can help money managers and investors prepare for volatile times which will upend the conventional analytical methods and beliefs of the past decades



## **Ankit Pande, CFA | Money Manager**

Ankit has an experience of over 9 years in Indian equities and over 3 years in software products. He started his career in core banking software with Infosys' Finacle, nurturing the product with large banking clients in APAC and small and mid-sized banks in India. He then moved in to equity research, along the way picking up the (U.S. based) CFA charter and a masters in business administration from The Chinese University of Hong Kong in 2017, being placed on the school's Dean List. He won the Thomson Reuters StarMine Award for best stock picker in the IT sector in 2014 and is a lifetime member of the Beta Gamma Sigma academic honour society. Over 2015-2019, Ankit ventured into seed stage fund raising, equity sales & relationship management in APAC. In his spare time, Ankit likes to read books on business cycle theory, macroeconomics & geopolitics



## **Vasav Sahgal, CFA | Money Manager**

Vasav is one of the youngest and most dynamic top rated Money Manager in the Mutual fund Industry. After clearing 3 levels of the CFA program, he started his journey with the quant Group as an investment analyst for equity as well as fixed income instruments. On a day to day basis, he is primarily responsible for equity asset allocation and credit research. Vasav is passionate about developing models using coding and has been deploying advanced data analytics in python for improved valuation analytics. Given his role, Vasav is the embodiment of our strategy – Adaptive Asset Allocation. In his spare time, Vasav enjoys drumming and reading financial literature extensively

<b>Investment Objective</b>	The primary investment objective of the scheme is to seek to generate consistent by investing in equity and equity related instruments falling under the category of large cap companies. The AMC will have the discretion to completely or partially invest in any of the type of securities stated above with a view to maximize the returns or on defensive considerations. However, there can be no assurance that the investment objective of the Scheme will be realized, as actual market movements may be at variance with anticipated trends.
<b>Benchmark Index</b>	NIFTY 100 TRI
<b>Investment Category</b>	An open ended equity scheme predominantly investing in large cap stocks
<b>Plans Available</b>	<b>quant Large Cap Fund</b> – Growth Option – Direct & Regular <b>quant Large Cap Fund</b> – Income Distribution cum Capital Withdrawal Option (Payout & Re-investment facility)– Direct & Regular
<b>Entry Load</b>	Nil
<b>Exit Load</b>	1% for 15 days
<b>Fund Managers</b>	Mr. Sandeep Tandon   Mr. Ankit Pande   Mr. Sanjeev Sharma   Mr. Vasav Sahgal
<b>Minimum Application</b>	Purchase: Rs.5,000/- plus in multiple of Re.1 thereafter
<b>Additional Investment</b>	Additional Purchase: Rs. 1,000/- and in multiples of Rs. 1/- thereafter Repurchase: Rs. 1,000/-
<b>Systematic Investment Plan (SIP)</b>	Rs. 1000/- and multiple of Re. 1/-
<b>Bank Details</b>	<b>Account Name:</b> QUANT LARGE CAP FUND COLLECTION A/C <b>Account Number:</b> 57500000987671 <b>IFSC Code:</b> HDFC0000060, Branch: HDFC, Fort, Mumbai 400001

<p><b>This product is suitable for investors who are seeking*:</b></p>	<p><b>Scheme Riskometer</b></p>	<p><b>Benchmark Riskometer</b></p>
<ul style="list-style-type: none"> <li>• Capital appreciation over long term</li> <li>• Investment in active portfolio of stocks screened, selected, weighed and rebalanced on the basis of a predefined fundamental factor model</li> </ul>		
<p>*Investors should consult their financial advisors if in doubt about whether the product is suitable for them.</p>	<p>Investors understand that their principal will be at moderately high risk.</p>	<p>Investors understand that their principal will be at moderately high risk.</p>


<p style="text-align: center;"><b>LINKS</b></p>		
<p style="text-align: center;">Scheme Information Document <a href="#">Click here</a></p>	<p style="text-align: center;">Scheme One Pager <a href="#">Click here</a></p>	<p style="text-align: center;">quant Mutual Fund Website <a href="#">Click here</a></p>

<p style="text-align: center;"><b>ALSO AVAILABLE ON</b></p>		

**Disclaimer:** All figures and data given in the document are dated unless stated otherwise. In the preparation of the material contained in this document, the AMC has used information that is publicly available, including information developed in-house. Some of the material used in the document may have been obtained from members/persons other than the AMC and/or its affiliates and which may have been made available to the AMC and/or to its affiliates. Information gathered and material used in this document is believed to be from reliable sources. The AMC however does not warrant the accuracy, reasonableness and / or completeness of any information. We have included statements / opinions / recommendations in this document, which contain words, or phrases such as “will”, “expect”, “should”, “believe” and similar expressions or variations of such expressions, that are “forward looking statements”. Actual results may differ materially from those suggested by the forward looking statements due to risk or uncertainties associated with our expectations with respect to, but not limited to, exposure to market risks, general economic and political conditions in India and other countries globally, which have an impact on our services and / or investments, the monetary and interest policies of India, inflation, deflation, unanticipated turbulence in interest rates, foreign exchange rates, equity prices or other rates or prices etc. The AMC (including its affiliates), the Mutual Fund, the trust and any of its officers, directors, personnel and employees, shall not liable for any loss, damage of any nature, including but not limited to direct, indirect, punitive, special, exemplary, consequential, as also any loss of profit in any way arising from the use of this material in any manner. The recipient alone shall be fully responsible/are liable for any decision taken on this material. Investors are advised to consult their own legal, tax and financial advisors to determine possible tax, legal and other financial implication or consequence of subscribing to the units of quant Mutual Fund. quant Money Managers Ltd. has no duty or obligation to update the information contained herein. Past performance may or may not be sustained in the future. This presentation, including the information contained herein, may not be copied, reproduced, republished, or posted in whole or in part, in any form without the prior written consent of quant Money Managers Ltd.



# LARGE CAP FUND



**quant Money Managers Limited**

**Corporate Office:** 6th Floor, Sea Breeze Building, Appasaheb Marathe Marg, Prabhadevi, Mumbai - 400 025.

Tel: +91 22 6295 5000 | Whatsapp: +91 9920 21 22 23 | E-mail: [help.investor@quant.in](mailto:help.investor@quant.in) | [help.distributor@quant.in](mailto:help.distributor@quant.in) | [www.quantmutual.com](http://www.quantmutual.com)