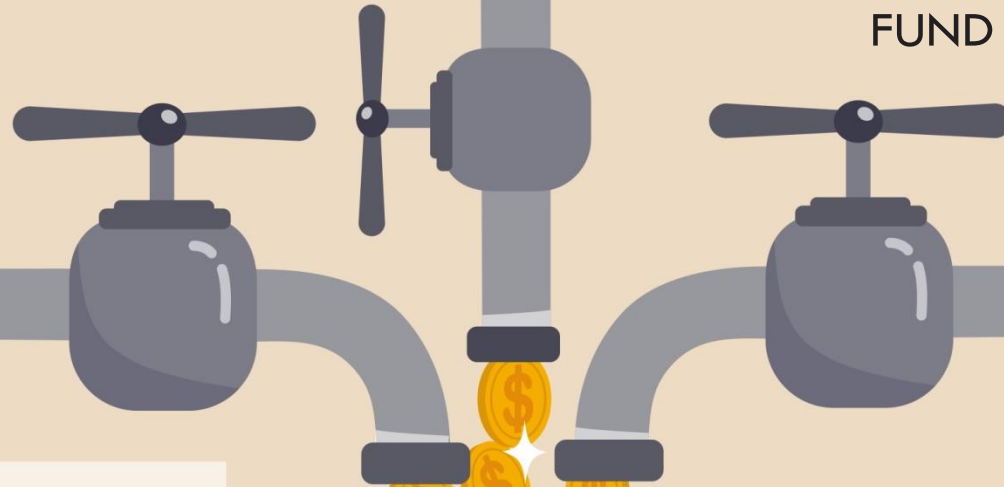


The spectrum of diversity

quant[®]
MULTI ASSET
FUND
(An open ended scheme investing in
equity, debt & commodity)



“ The most important thing you can have is a good strategic asset allocation mix with a balanced, structured portfolio that does well in different environments. We don't know that we're going to win. We have to have diversified bets

– Ray Dalio, American billionaire investor ”

- Asset allocation involves dividing your investments among different assets, such as stocks, bonds, cash, gold & other commodities
- A target asset allocation keeps changing at different times in a person's life and depends on one's current financial situation, investment horizon, and risk tolerance level



Time Horizon:

What is the time horizon available to achieve your financial goals

Risk Tolerance:

This defines the Limits or Boundaries of the Risks you can take

Financial Situation:

What is your Current Net Worth? Assets you can Allocate for your Goals

A multi asset strategy emphasizes on a mix of growth and income oriented assets including traditional stocks, bonds and complementary income sources such as commodities and units of REITs (Real Estate Investment Trusts) that can possibly achieve better investment outcomes



- Multi Asset Funds can be a **powerful and flexible tool to achieve your investment goals**
- Works on the **principle of diversification** by spreading money across different investments
- Historically, **stocks, bonds, and commodities have not moved up and down at the same time**
- Factors that may cause one asset class to perform poorly **may improve returns for another asset class**
- One should **invest in various asset classes** so that if one is losing money, the others make up for those losses
- Potential to provide **competitive total return** with a focus on **downside risk management**



Equity

Potential to provide alpha

Provides relative stability
and accrual income

Debt



Commodity

Hedge against inflation and
geo-political risk

Yield enhancement and
diversification strategy

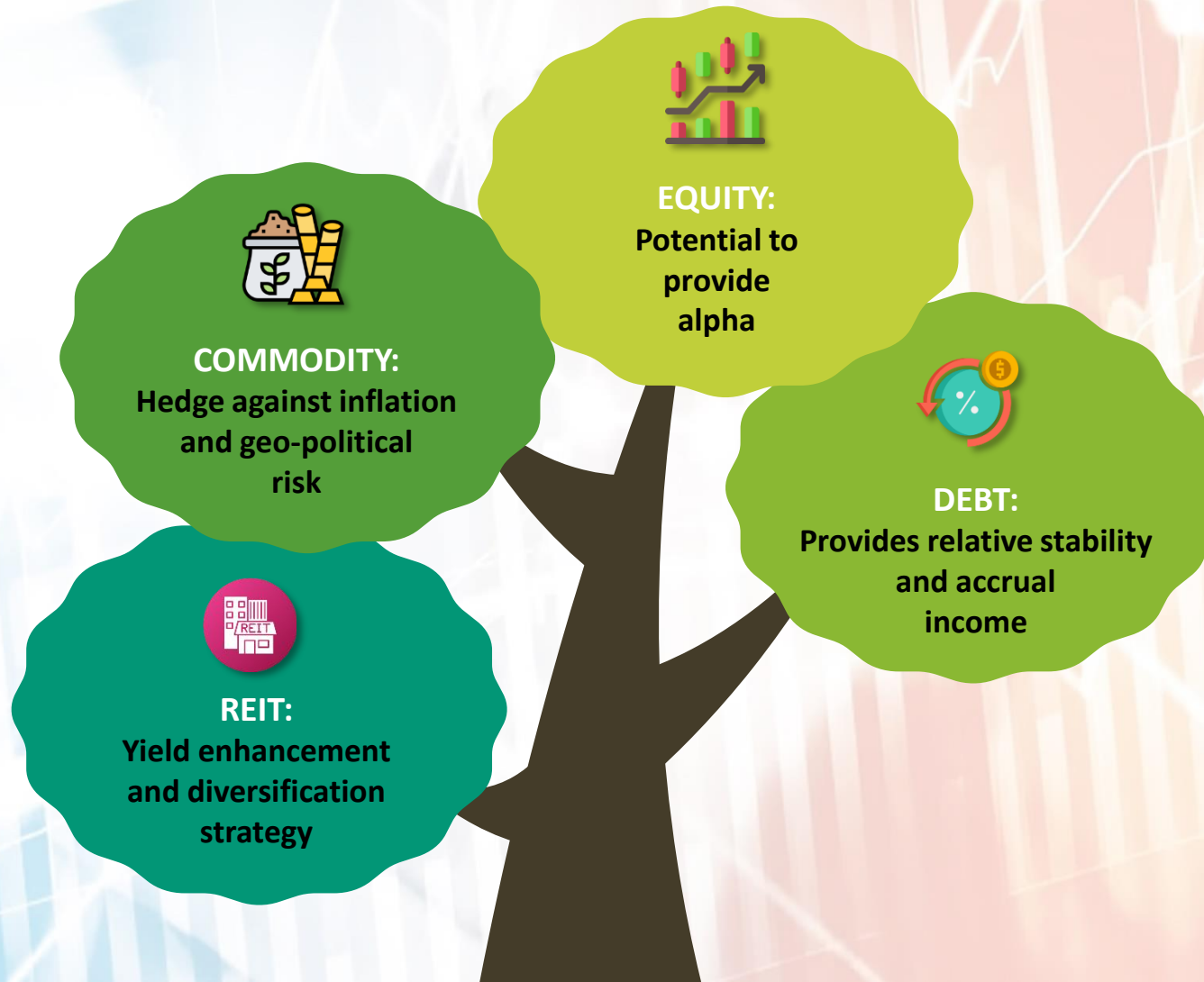
REIT



- Every investor needs a healthy mix of assets in their portfolio
- Most investors lack the knowledge or resources to track, understand, and modify the proportion of each asset class in the portfolio to suit their individual investment needs

Every investor needs a healthy mix of assets in their portfolio

Most investors lack the knowledge or resources to track, understand, and modify the proportion of each asset class in the portfolio to suit their individual investment needs



Performance of any asset class is unpredictable and varies with every market cycle



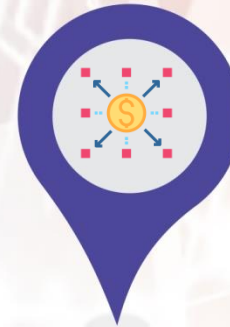
Timing the market for various asset classes is difficult for investors and involves research and knowledge



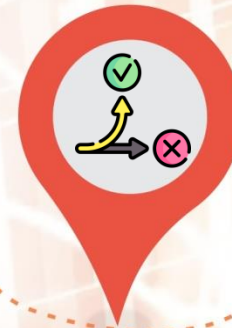
Investors tend to invest on momentum and fail to notice bigger trends thereby increasing portfolio risk



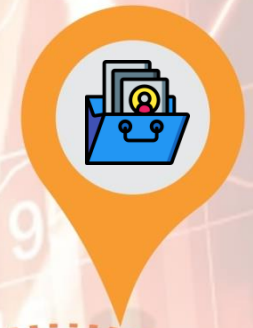
Under or over diversification is a leading cause of suboptimal returns bringing volatility to portfolios



Combining low or negatively correlated assets reduces risk and facilitates broader participation in opportunities



A go-anywhere portfolio allows nimble switching between capital growth and capital preservation strategies



Multi asset allocation is a fundamental investing principle that helps investors **maximize profits** and **minimize risk**

Equity
(10-80% of portfolio)



Long term growth potential
Higher risk-reward

Fixed Income
(10-80% of portfolio)



Reasonable return
Less volatile than equity

Gold & Silver ETFs
(10-80% of portfolio)



Reasonable return
Inflation hedge

Commodity ETFs
(0-30% of portfolio)



Reasonable return
Inflation hedge

REITs & InvITs
(0-10% of portfolio)



Rental income
Inflation hedge



DIVERSIFICATION



Our multi asset strategy is built along **dynamically managed exposure** to multiple asset classes to build a **risk-aware portfolio** while geared to **capitalize on opportunities**



Fund Positioning

- For investors wishing to **benefit from a combination of long term growth and income strategies** by investing in instruments across equity, debt, commodities, and REITs
- Investors with a **long-term horizon (3 years and above)** and aiming for reasonable returns with lower volatility over the long term
- Investors who wish to participate in the **upside potential of all asset classes** through dynamic portfolio rebalancing

Fund Strategy

- The scheme can **invest 10-80 each in equity, debt (including cash), gold and silver ETFs, 0-30% in Exchange Traded Commodity Derivatives, and 0-10% in units of REITs and InvITs**
- The scheme has **flexibility to invest** in companies across market caps, and other asset classes to **optimize risk-return payoffs**
- Our **money managers construct an unconstrained portfolio** and **balance asset classes** to achieve a **number of investment outcomes**, such as growth and income, while minimizing risk
- Our signature **VLRT Framework and Predictive Analytics tools** dynamically manages known risks and identify opportunities

- In the Finance Bill, 2023 the most significant amendment was the withdrawal of the benefit of indexation on long term capital gains (LTCG) on debt mutual funds for investments made on or after April 1, 2023
- Since April 1, 2023, debt mutual fund schemes are being taxed at Income tax rates applicable to an individual's income tax slab. This consequently affects investors' return from a taxation perspective
- In view of this impact, and **in the larger interest of our investors, we repositioned the asset allocation of quant Multi Asset Fund and modified its LTCG taxation (where equity exposure is $\geq 35\%$ and $< 65\%$ of portfolio) from marginal tax rate to 20% with indexation after a 3 years holding period**

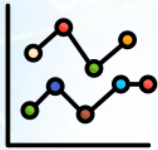
Asset Classes	Asset Allocation	Asset Allocation
	(as per SID)	(current positioning)
Equities	10-80%	35-65%
Commodities	10-80%	10-55%
Debt & Cash	10-80%	10-55%

Now with our **current asset allocation positioning**, investors can continue to **enjoy the indexation benefit** along with our unique **dynamic style of money management**



Unconstrained in Search of Opportunity

Diversified across traditional and non-traditional asset classes, and sectors constantly seeking appropriate balance of risk and return. Unconstrained investment strategy searches out compelling growth, income, and hedging opportunities across asset classes



Assets with Low Correlation

With a careful selection of assets with low correlations, this fund can potentially reduce portfolio volatility. Rigorous research and analysis of historical correlations enable our money managers to construct portfolios that offer more stable returns over time



Competitive Performance

Proven track record of delivering competitive returns across market cycles. By embracing the power of our multi-asset allocation and dynamic rebalancing strategies, investors can navigate the complexities of the investment world with confidence



Flexible Asset Allocation

Tactical asset allocation to navigate different market cycles and the flexibility to change exposure as longer term themes evolve sets the tone for pursuit of broad unbiased opportunities



Access to Multi Strategy

A full range of portfolio building blocks across asset classes, indices, factors, and alpha seeking strategies. The VLRT Framework and Predictive Analytics tools allow us to assess opportunities and risks through multiple lenses



Downside Risk Focus

Equipped with a risk-first mind set, we have displayed consistent track record of providing downside risk focus during periods of elevated market volatility



Multi Investment Basket

Invests in several asset classes and cultivates a diversified investment strategy, backed by analysis, insights, technology, and tools, which are instrumental to achieving long-term investment success



Adaptive Asset Management

Allocating a portion of one's portfolio to multiple assets allows investors to participate in a potential upside while mitigating associated risks. Adapts to changing markets through our 'Dynamic Style of Money Management'



Strong Risk Management Foundation

Spreading investments across stocks, bonds, cash, commodities, and real estate minimizes the impact of any one investment's performance on the overall portfolio and protects against market volatility and significant losses



Convenience and Simplicity

Instead of individually managing and securing a diverse set of assets, investors enjoy a single point access to many asset classes. This simplifies the investment process, saves time, and reduces administrative burden



No Missing Out

Investors can reduce the chance of missing out a rally in any asset class. As various asset classes move at different points in time, the money manager rebalances the portfolio to optimize the fund's risk–return profile



Expertise in Cycles Analytics

The fund adapts to changing market conditions, with our experienced money managers actively adjusting the portfolio. This approach aims for consistent returns and effective navigation through market cycles

Investment Process

Global Risk Appetite Analysis and Global Liquidity Analysis to determine the flow of money across asset classes, regions and countries

Indian Risk Appetite Analysis and Domestic Liquidity Analysis to determine whether it is a "Risk On / Risk Off" Environment

Money Flow Analysis can help identify stocks at inflection points that are experiencing a shift in perception

The VLR components of our VLRT framework spring into action and help us shortlist stocks

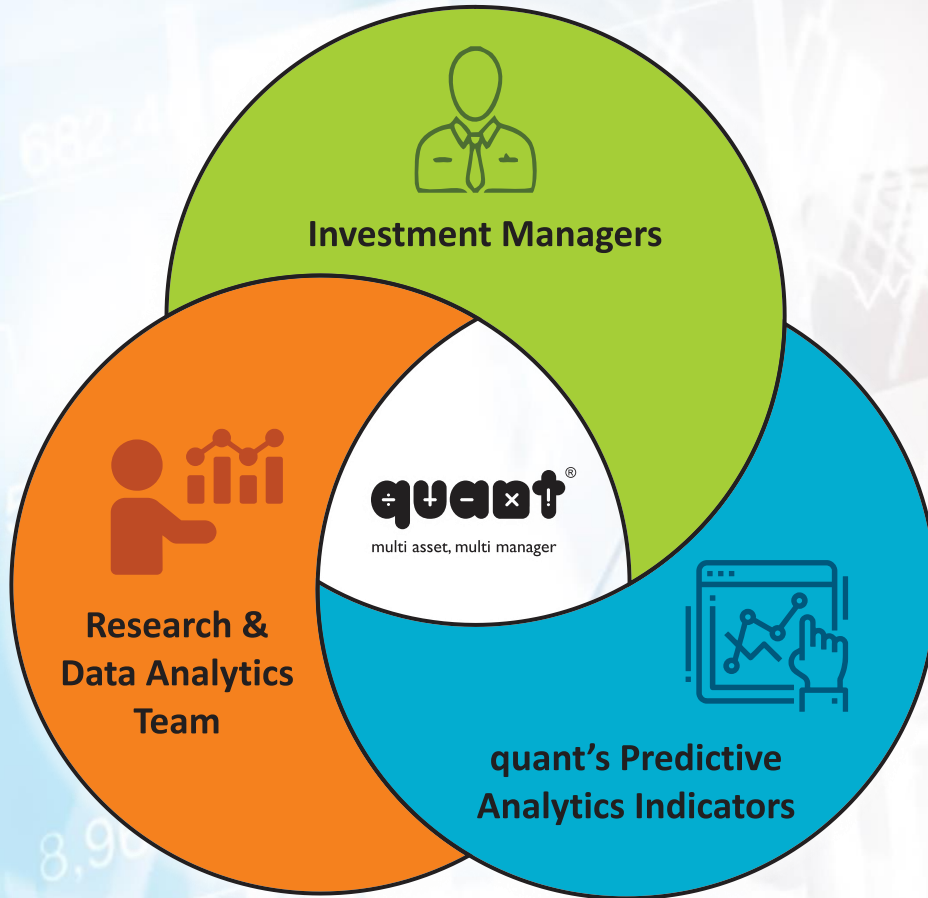
Lastly, it comes down to "Timing" – a function of all our analytical factors

quant
Port-
folio

quant pursues global research with a focus on financial markets and the real economy which includes the real economy and leveraged economy. We place a large emphasis on the role of participants' behavior. This idea has evolved into a multi-dimensional research perspective which is now formulated in our VLRT framework.

In a dynamic world, it is not just a choice but a necessity to adopt a multi-dimensional approach

The world is becoming non-linear and parabolic and to stay relevant, money managers must think with an unconstrained mind, actively update their methods and earnestly search for absolute returns, considering all markets and asset classes



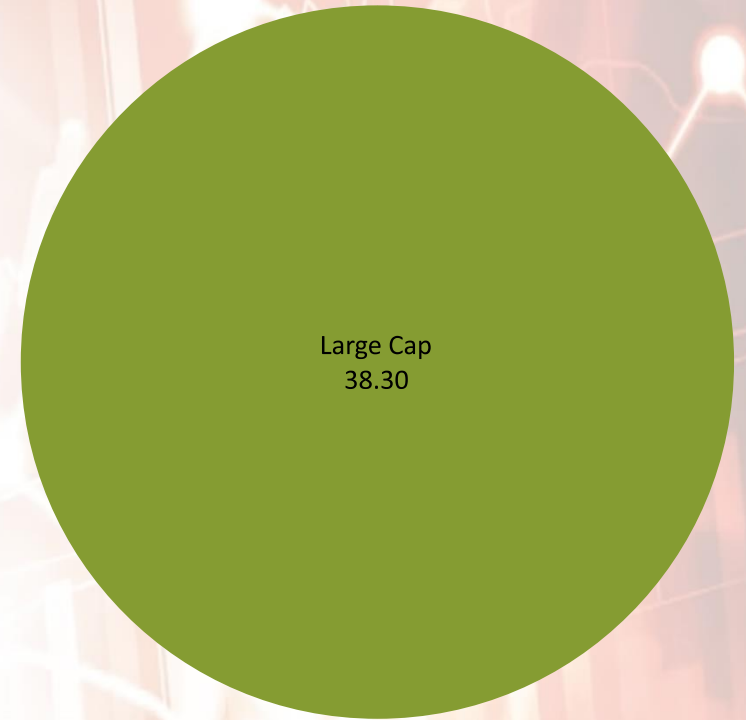
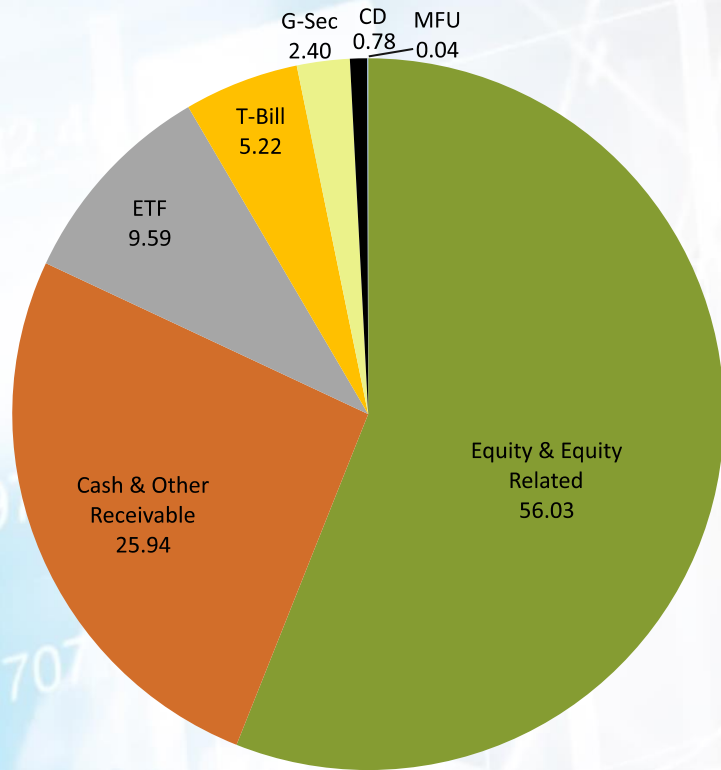
“Analysis Adds Up”

We believe safeguarding investor wealth is paramount. Apart from reducing risk by investing **across asset classes**, we take diversification to another dimension by ensuring every investment decision comes from a focused discussion between **investment managers, research analysts and analytics team** – each with diverse **sets of capabilities and experiences**

VLRT

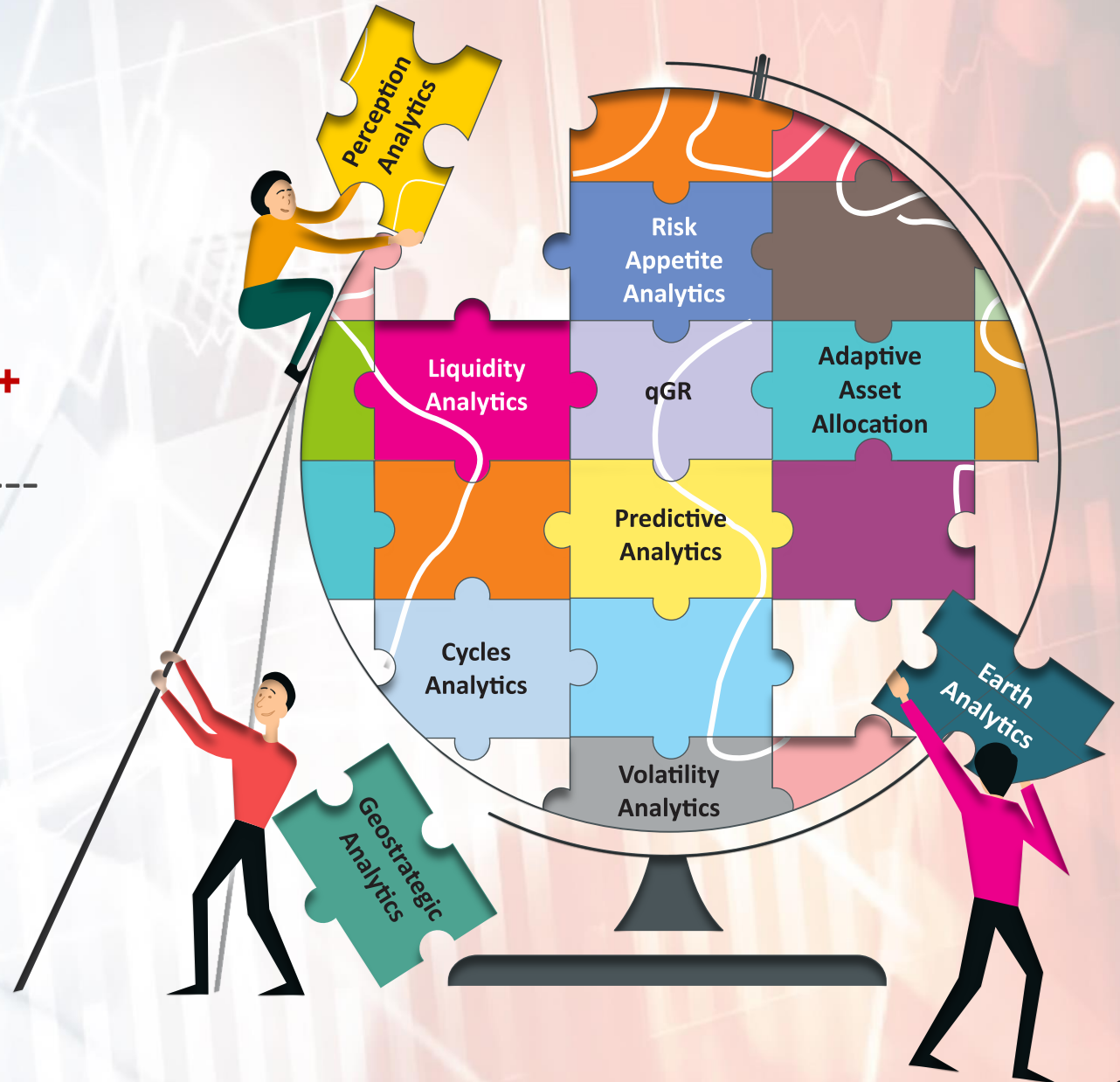


DYNAMIC REBALANCING



MuM
Rs. 97,000 Crores⁺

Folios^{*}
84 Lacs⁺



*Total folios and MuM (Money under Management) data as on 30 November '24 (approximately)

quant MF – Equity schemes

Fund	Money Managers	3 Months		6 Months		1 Year		3 Years		5 Years		Since Inception	
		Fund	BM	Fund	BM	Fund	BM	Fund	BM	Fund	BM	Fund	BM
quant Small Cap Fund (Inception Date: Oct. 29, 1996)	Ankit Pande, Vasav Sahgal, Sanjeev Sharma	-2.36%	-1.84%	7.71%	12.75%	40.02%	35.95%	30.52%	25.59%	47.82%	30.79%	19.79%	18.08%
quant Tax Plan (Inception Date: Apr. 13, 2000)	Ankit Pande, Vasav Sahgal	-8.44%	-3.86%	-2.71%	7.37%	27.22%	27.89%	20.86%	16.86%	32.90%	19.47%	21.84%	15.17%
quant Mid Cap Fund (Inception Date: Mar. 20, 2001)	Ankit Pande, Vasav Sahgal, Sanjeev Sharma	-8.58%	-3.73%	-3.84%	8.06%	30.15%	32.71%	26.36%	24.22%	34.04%	28.04%	19.28%	19.84%
quant Multi Asset Fund (Inception Date: Apr. 17, 2001)	Sandeep Tandon, Ankit Pande, Sanjeev Sharma, Vasav Sahgal, Varun Pattani	3.42%	-2.18%	5.82%	4.77%	38.57%	18.01%	23.93%	10.71%	29.21%	11.23%	16.25%	N.A.
quant Absolute Fund (Inception Date: Apr. 17, 2001)	Sanjeev Sharma, Ankit Pande, Vasav Sahgal	-6.18%	-1.85%	-0.17%	6.23%	24.83%	17.23%	16.46%	11.09%	24.96%	13.44%	17.39%	N.A.
quant Active Fund (Inception Date: Apr. 17, 2001)	Ankit Pande, Vasav Sahgal, Sanjeev Sharma	-7.89%	-3.47%	-1.84%	8.46%	26.77%	30.08%	18.75%	19.68%	29.76%	23.16%	21.03%	16.76%
quant Liquid Fund (Inception Date: Oct. 03, 2005)	Sanjeev Sharma	1.80%	1.76%	3.57%	3.55%	7.32%	7.34%	6.35%	6.37%	5.76%	5.39%	7.23%	6.76%
quant Large & Mid Cap Fund (Inception Date: Jan. 08, 2007)	Ankit Pande, Vasav Sahgal, Sanjeev Sharma	-8.49%	-3.95%	-1.83%	7.29%	32.77%	29.26%	23.31%	19.30%	26.82%	22.42%	20.12%	17.16%
quant Infrastructure Fund (Inception Date: Sep. 20, 2007)	Ankit Pande, Vasav Sahgal	-6.63%	-6.67%	-3.62%	0.75%	40.67%	34.54%	26.20%	21.82%	36.10%	22.87%	19.31%	12.23%
quant Focused Fund (Inception Date: Aug. 28, 2008)	Ankit Pande, Vasav Sahgal, Sanjeev Sharma	-6.95%	-3.86%	1.53%	7.37%	28.51%	27.89%	19.48%	16.86%	23.65%	19.47%	18.58%	15.17%
quant Flexi Cap Fund (Inception Date: Oct. 17, 2008)	Sandeep Tandon, Ankit Pande, Sanjeev Sharma, Vasav Sahgal	-9.47%	-3.86%	-1.67%	7.37%	33.06%	27.89%	21.41%	16.86%	32.67%	19.47%	20.41%	15.17%
quant ESG Equity Fund (Inception Date: Nov. 05, 2020)	Ankit Pande, Sanjeev Sharma, Vasav Sahgal	-7.88%	-5.22%	5.85%	7.82%	34.73%	25.00%	25.92%	12.40%	N.A.	N.A.	37.63%	19.92%
quant Quantamental Fund (Inception Date: May. 03, 2021)	Ankit Pande, Sandeep Tandon, Sanjeev Sharma, Vasav Sahgal	-8.65%	-4.17%	-3.23%	6.81%	32.08%	26.86%	29.65%	15.82%	N.A.	N.A.	28.09%	18.64%
quant Value Fund (Inception Date: Nov. 30, 2021)	Sandeep Tandon, Ankit Pande, Sanjeev Sharma, Vasav Sahgal	-6.11%	-3.86%	2.16%	7.37%	44.53%	27.89%	N.A.	N.A.	N.A.	N.A.	29.11%	16.90%
quant Large Cap Fund (Inception Date: Aug. 11, 2022)	Sandeep Tandon, Ankit Pande, Sanjeev Sharma, Vasav Sahgal	-4.94%	-4.19%	2.06%	6.47%	32.45%	25.74%	N.A.	N.A.	N.A.	N.A.	21.32%	16.82%
quant Overnight Fund (Inception Date: Dec. 04, 2022)	Sanjeev Sharma	1.68%	1.63%	3.36%	3.29%	7.01%	6.76%	N.A.	N.A.	N.A.	N.A.	7.02%	6.73%
quant Gilt Fund (Inception Date: Dec. 21, 2022)	Sanjeev Sharma	1.89%	2.08%	4.27%	5.13%	8.82%	10.72%	N.A.	N.A.	N.A.	N.A.	7.83%	8.75%
quant Dynamic Asset Allocation Fund (Inception Date: Apr. 12, 2023)	Sandeep Tandon, Ankit Pande, Sanjeev Sharma, Vasav Sahgal	-6.70%	-0.99%	2.20%	5.82%	35.16%	15.37%	N.A.	N.A.	N.A.	N.A.	36.66%	15.00%
quant Business Cycle Fund (Inception Date: May. 30, 2023)	Sandeep Tandon, Ankit Pande, Sanjeev Sharma, Vasav Sahgal	-7.24%	-3.86%	7.96%	7.37%	33.60%	27.89%	N.A.	N.A.	N.A.	N.A.	46.88%	28.53%
quant BFSI Fund (Inception Date: Jun. 20, 2023)	Sandeep Tandon, Ankit Pande, Sanjeev Sharma, Vasav Sahgal	-9.36%	1.87%	-3.76%	11.47%	26.04%	21.25%	N.A.	N.A.	N.A.	N.A.	37.96%	16.49%
quant Healthcare Fund (Inception Date: Jul. 17, 2023)	Sandeep Tandon, Ankit Pande, Sanjeev Sharma, Vasav Sahgal	-3.67%	-1.29%	16.63%	16.74%	42.90%	40.54%	N.A.	N.A.	N.A.	N.A.	45.03%	38.54%
quant Manufacturing Fund (Inception Date: Aug. 14, 2023)	Sandeep Tandon, Ankit Pande, Sanjeev Sharma, Vasav Sahgal	-8.14%	-6.63%	3.35%	1.88%	41.40%	38.73%	N.A.	N.A.	N.A.	N.A.	45.49%	35.39%
quant Teck Fund (Inception Date: Sep. 05, 2023)	Sanjeev Sharma, Ankit Pande, Vasav Sahgal	-3.22%	1.87%	15.04%	30.34%	37.82%	34.91%	N.A.	N.A.	N.A.	N.A.	29.81%	28.44%
quant Momentum Fund (Inception Date: Nov. 20, 2023)	Sandeep Tandon, Ankit Pande, Sanjeev Sharma, Vasav Sahgal	-8.87%	-3.86%	0.49%	7.37%	47.50%	27.89%	N.A.	N.A.	N.A.	N.A.	46.22%	29.41%
quant Commodities Fund (Inception Date: Dec. 27, 2023)	Sandeep Tandon, Ankit Pande, Sanjeev Sharma, Vasav Sahgal	-2.98%	-9.56%	13.38%	-4.40%	N.A.	N.A.	N.A.	N.A.	N.A.	N.A.	45.80%	13.64%
quant Consumption Fund (Inception Date: Jan. 24, '24)	Sandeep Tandon, Ankit Pande, Sanjeev Sharma, Vasav Sahgal	-6.16%	-4.83%	5.17%	8.49%	N.A.	N.A.	N.A.	N.A.	N.A.	N.A.	13.34%	24.61%
quant PSU Fund (Inception Date: Feb. 20, '24)	Sandeep Tandon, Ankit Pande, Sanjeev Sharma, Vasav Sahgal	-13.02%	-10.99%	-5.08%	-3.76%	N.A.	N.A.	N.A.	N.A.	N.A.	N.A.	12.32%	10.74%

Note: Data as on 01 December '24. All returns are for direct plan. The calculation of returns since inception uses 07-01-2013 as the starting date for quant Small Cap Fund, quant ELSS Tax Saver Fund, quant Mid Cap Fund, quant Multi Asset Fund, quant Absolute Fund, quant Active Fund, quant Liquid Fund, quant Large & Mid Cap Fund, quant Infrastructure Fund, quant Focused Fund, quant Flexi Cap Fund

quant MF – Debt schemes

Fund	Fund Manager	7 Days		15 Days		1 Month		3 Month		6 Months		1 Year		3 Years		5 Years		Since Inception	
		Fund	BM	Fund	BM	Fund	BM	Fund	BM	Fund	BM	Fund	BM	Fund	BM	Fund	BM	Fund	BM
quant Liquid Fund (Inception Date: Oct. 03, 2005)	Sanjeev Sharma	6.90%	1.96%	6.78%	4.34%	7.14%	6.10%	7.19%	4.98%	7.14%	6.90%	7.32%	7.24%	6.35%	6.33%	5.76%	5.37%	7.23%	6.75%
quant Overnight Fund (Inception Date: Dec. 04, 2022)	Sanjeev Sharma	6.82%	1.91%	6.67%	4.27%	6.67%	5.65%	6.70%	4.60%	6.71%	6.39%	7.01%	6.66%	N.A.	N.A.	N.A.	N.A.	7.02%	6.68%
quant Gilt Fund (Inception Date: Dec. 21, 2022)	Sanjeev Sharma	14.55%	1.96%	7.70%	2.79%	6.11%	3.02%	7.55%	4.45%	8.53%	9.04%	8.82%	10.07%	N.A.	N.A.	N.A.	N.A.	7.83%	8.43%

Note :Data as on 30 November '24. The above performance data uses absolute returns for period less than 1 year and annualized returns for period more than 1 year for Direct (G) plans. However, different plans have different expense structure. Past performance may not be indicative of future performance.

**Sandeep Tandon | Founder & Chief Investment Officer**

Sandeep is the founder & chief investment officer of the quant Group and has a vast experience of over 30 years in the capital markets. His journey in the money management business started in FY 1992-93 with GIC mutual fund (a JV partner with George Soros in India) where he was a trainee. He later joined IDBI Asset Management (now Principal Asset Management), where he was a founding member and was part of the core team that initialized the asset management business. He played a key role in devising, conceptualizing and marketing one of India's most successful mutual fund schemes: IDBI I-NITS 95. Furthermore, Sandeep worked in pivotal positions at several reputed financial services firms including ICICI Securities (a JV partner with J P Morgan in India), Kotak Securities (a J V partner with Goldman Sachs in India) and REFCO (erstwhile global derivatives firm). He has also worked at the Economic Times Research Bureau (a research wing of Bennett, Coleman and Company Limited)

Sandeep's credentials as a Global Macro Strategist are well established. He has channeled his vast experiences, interests and novel thinking into building the Predictive Analytics framework and the dynamic VLRT investment framework of the quant group. It is these frameworks coupled with his deep understanding of various asset classes at a global level, including, credit, commodities, equities and now digital currencies that enable Sandeep in definitive identification of market inflexion points and arrive at conclusive micro and macro calls.

Sandeep has a strong belief in quant Group's role as a knowledge partner in creating awareness about latest developments in investment philosophy and ideas, such as behavioral research. It is for this reason that he believes investor education is of utmost importance and the group, under his leadership, has undertaken many initiatives in this regard. Based on this belief Sandeep authored a book titled 'Being Relevant' which was published in May 2019. This book builds on research covering decades, even centuries of data points, distilled through quant's VLRT Framework and Predictive Analytics indicators. The book further outlines the potential trajectory for the world in the coming decades that can help money managers and investors prepare for volatile times which will upend the conventional analytical methods and beliefs of the past decades



Ankit Pande, CFA | Money Manager

Ankit has an experience of over 12 years in Indian equities and over 3 years in software products. He started his career in core banking software with Infosys' Finacle, nurturing the product with large banking clients in APAC and small and mid-sized banks in India. He then moved in to equity research, along the way picking up the (U.S. based) CFA charter and a masters in business administration from The Chinese University of Hong Kong in 2017, being placed on the school's Dean List. He won the Thomson Reuters StarMine Award for best stock picker in the IT sector in 2014 and is a lifetime member of the Beta Gamma Sigma academic honour society. Over 2015-2019, Ankit ventured into seed stage fund raising, equity sales & relationship management in APAC. In his spare time, Ankit likes to read books on business cycle theory, macroeconomics & geopolitics



Sanjeev Sharma | Money Manager

Sanjeev brings along a rich and diverse experience in the Capital Markets of over 18 years to his role of a Money Manager. He has obtained an M.Com, PG Diploma in Business Administration (Finance) and Certified Treasury Manager (Forex & Risk Management). He has been associated with various schemes of quant mutual fund since 2005. Sanjeev specializes in analysis of credit risk and is responsible for monitoring and assessing investment opportunities across asset classes. He has a deep understanding of macroeconomic policies and its impact on the credit markets. Over the years, Sanjeev has built formidable relationships with key treasurers in the industry. In his spare time, Sanjeev enjoys reading, listening to music and traveling



Vasav Sahgal, CFA | Money Manager

Vasav is one of the youngest and most dynamic top rated Money Manager in the Mutual fund Industry. After clearing 3 levels of the CFA program, he started his journey with the quant Group as an investment analyst for equity as well as fixed income instruments. On a day to day basis, he is primarily responsible for equity asset allocation and credit research. Vasav is passionate about developing models using coding and has been deploying advanced data analytics in python for improved valuation analytics. Given his role, Vasav is the embodiment of our strategy – Adaptive Asset Allocation. In his spare time, Vasav enjoys drumming and reading financial literature extensively



Varun Pattani, CA. | Money Manager

Varun thrives at providing a novel approach to risk management. He has completed all levels of Chartered Accountancy from the Institute of Chartered Accountants of India (ICAI). In his role at quant, Varun is engaged in industry and stock research, macro analysis and implementation of FinTech in the organization. He is highly passionate about the financial markets and is a true believer of research-backed investing that helps in finding sustainable business models. For Varun, analysis truly adds up!

Investment Objective	The investment objective of the scheme is to generate capital appreciation & provide long-term growth opportunities by investing in instruments across the three asset classes viz. Equity, Debt and Commodity. There is no assurance that the investment objective of the Scheme will be realized.
Benchmark Index	Composite Benchmark of 65% S&P BSE 200 + 15% CRISIL Short Term Bond Fund Index + 20% iCOMDEX Composite Index (Total Return variant of the index (TRI) will be used for performance comparison).
Investment Category	An open ended scheme investing in equity, debt and commodity
Plans Available	quant Multi Asset Fund – Growth Option – Direct & Regular quant Multi Asset Fund – Income Distribution cum Capital Withdrawal Option (Payout & Re-investment facility)– Direct & Regular
Entry Load	Nil
Exit Load	1% for 15 days
Fund Managers	Mr. Sandeep Tandon Mr. Ankit Pande Mr. Sanjeev Sharma Mr. Vasav Sahgal Mr. Varun Pattani
Minimum Application	Purchase: Rs.5,000/- plus in multiple of Re.1 thereafter
Additional Investment	Additional Purchase: Rs. 1,000/- and in multiples of Rs. 1/- thereafter Repurchase: Rs. 1,000/-
Systematic Investment Plan (SIP)	Rs. 1000/- and multiple of Re. 1/-
Bank Details	Account Name: QUANT MULTI ASSET FUND Account Number: 00030350001256 IFSC Code: HDFC0000003, Branch: HDFC Bank, Surya Kiran, K.G Marg

<p>This product is suitable for investors who are seeking*:</p>	<p>Scheme Riskometer</p>	<p>Benchmark Riskometer</p>
<ul style="list-style-type: none"> • To Generate Capital appreciation • To invest in equity, debt and commodity 		
<p>*Investors should consult their financial advisors if in doubt about whether the product is suitable for them</p>		

LINKS		
<p>Scheme Information Document Click here</p>	<p>Scheme One Pager Click here</p>	<p>quant Mutual Fund Website Click here</p>

ALSO AVAILABLE ON			

Disclaimer: All figures and data given in the document are dated unless stated otherwise. In the preparation of the material contained in this document, the AMC has used information that is publicly available, including information developed in-house. Some of the material used in the document may have been obtained from members/persons other than the AMC and/or its affiliates and which may have been made available to the AMC and/or to its affiliates. Information gathered and material used in this document is believed to be from reliable sources. The AMC however does not warrant the accuracy, reasonableness and / or completeness of any information. We have included statements / opinions / recommendations in this document, which contain words, or phrases such as “will”, “expect”, “should”, “believe” and similar expressions or variations of such expressions, that are “forward looking statements”. Actual results may differ materially from those suggested by the forward looking statements due to risk or uncertainties associated with our expectations with respect to, but not limited to, exposure to market risks, general economic and political conditions in India and other countries globally, which have an impact on our services and / or investments, the monetary and interest policies of India, inflation, deflation, unanticipated turbulence in interest rates, foreign exchange rates, equity prices or other rates or prices etc. The AMC (including its affiliates), the Mutual Fund, the trust and any of its officers, directors, personnel and employees, shall not liable for any loss, damage of any nature, including but not limited to direct, indirect, punitive, special, exemplary, consequential, as also any loss of profit in any way arising from the use of this material in any manner. The recipient alone shall be fully responsible/are liable for any decision taken on this material. Investors are advised to consult their own legal, tax and financial advisors to determine possible tax, legal and other financial implication or consequence of subscribing to the units of quant Mutual Fund. quant Money Managers Ltd. has no duty or obligation to update the information contained herein. Past performance may or may not be sustained in the future. This presentation, including the information contained herein, may not be copied, reproduced, republished, or posted in whole or in part, in any form without the prior written consent of quant Money Managers Ltd.

Mutual Fund investments are subject to market risks, read all scheme related documents carefully



quant[®]
MULTI ASSET
FUND

quant Money Managers Limited

Corporate Office: 6th Floor, Sea Breeze Building, Appasaheb Marathe Marg, Prabhadevi, Mumbai - 400 025.

Tel: +91 22 6295 5000 | Whatsapp: +91 9920 21 22 23 | E-mail: help.investor@quant.in | help.distributor@quant.in | www.quantmutual.com